

Recombinant Human GATC Protein, GST-tagged

Cat. No. GATC-4760H Lot. No. (See product label)

SPECIFICATION

Product Overview	Human GATC full-length ORF (NP_789788.1, 1 a.a. - 136 a.a.) recombinant protein with GST-tag at N-terminal.
Species	Human
Source	Wheat Germ
Description	GATC (Glutamyl-TRNA Amidotransferase Subunit C) is a Protein Coding gene. Among its related pathways are Metabolism and tRNA Aminoacylation. GO annotations related to this gene include glutamyl-tRNA synthase (glutamine-hydrolyzing) activity. An important paralog of this gene is ENSG00000111780.
Molecular Mass	41.5 kDa
AA Sequence	MWSRLVWLGLRAPLGGGRQGFTSKADPQGSGRITAAVIEHLERLALVDFGSREAVAR LEKAIAFADRLRAVDTDGVEPMESVLEDRCLYLRSNDNVEGNCADPELLQNSHRVVE EYFVAPPGNISLPKLDEQEPPHPS
Applications	Enzyme-linked Immunoabsorbent Assay Western Blot (Recombinant protein) Antibody Production Protein Array
Notes	Best use within three months from the date of receipt of this protein.

 Tel: 1-631-559-9269 1-516-512-3133

 Email: info@creative-biomart.com  Fax: 1-631-938-8127

 45-1 Ramsey Road, Shirley, NY 11967, USA

Storage Store at -80 centigrade. Aliquot to avoid repeated freezing and thawing.

Storage Buffer 50 mM Tris-HCl, 10 mM reduced Glutathione, pH=8.0 in the elution buffer.

GENE INFORMATION

Gene Name GATC glutamyl-tRNA amidotransferase subunit C [Homo sapiens (human)]

Official Symbol GATC

Synonyms GATC; glutamyl-tRNA amidotransferase subunit C; 15E1.2; glutamyl-tRNA(Gln) amidotransferase subunit C, mitochondrial; glu-AdT subunit C; glutamyl-tRNA(Gln) amidotransferase, subunit C homolog; EC 6.3.5.-

Gene ID 283459

mRNA Refseq NM_176818

Protein Refseq NP_789788

MIM 617210

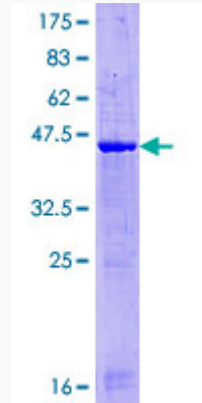
UniProt ID O43716

 Tel: 1-631-559-9269 1-516-512-3133

 Email: info@creative-biomart.com  Fax: 1-631-938-8127

 45-1 Ramsey Road, Shirley, NY 11967, USA

**Quality Control
Testing**



12.5% SDS-PAGE Stained with Coomassie Blue.

 Tel: 1-631-559-9269 1-516-512-3133

 Email: info@creative-biomart.com  Fax: 1-631-938-8127

 45-1 Ramsey Road, Shirley, NY 11967, USA