

## Recombinant Human GATM protein, His-tagged

**Cat. No.** GATM-1925H    **Lot. No.** (See product label)

### SPECIFICATION

<b>Product Overview</b>	Recombinant GATM protein was fused to His-tag and expressed in E.coli.
<b>Species</b>	Human
<b>Source</b>	E.coli
<b>ProteinLength</b>	410
<b>Description</b>	<p>GATM (Glycine amidinotransferase, mitochondrial) is a mitochondrial enzyme that belongs to the amidinotransferase family. This enzyme is involved in creatine biosynthesis, whereby it catalyzes the transfer of a guanido group from L-arginine to glycine, resulting in guanidinoacetic acid, the immediate precursor of creatine. Creatine plays a vital role in energy metabolism in muscle tissues. It plays a role in embryonic and central nervous system development. Recombinant human GATM protein, fused to His-tag at N-terminus, was expressed in E. coli and purified by using conventional chromatography techniques.</p>
<b>Form</b>	Liquid. In 20mM Tris-HCl buffer (pH 8.0) containing 2mM DTT, 10% glycerol, 200mM NaCl
<b>Molecular Mass</b>	46.9 kDa
<b>AA Sequence</b>	<p>MGSSHHHHHHSSGLVPRGSHMGSMSTQAATASSRNSCAADDKATEPLPKDCPVSYNEWDPLEEVIVGRAENACVPPFTIEVKANTYEKYWPFYQKQGGHYFPKDHLKKA VAEIEEMCNILKTEGVTVRRPDPIDWSLKYKTPDFESTGLYSAMPRDILIVVGNEIIEA</p>

 Tel: 1-631-559-9269    1-516-512-3133

 Email: [info@creative-biomart.com](mailto:info@creative-biomart.com)     Fax: 1-631-938-8127

 45-1 Ramsey Road, Shirley, NY 11967, USA

PMAWRSRFFEYRAYRSIIKDYFHRGAKWTTAPKPTMADELYNQDYPIHSVEDRHKL  
 AAQGKFVTTTEFEPFCFDAADFIRAGRDIFAQRSQVTNYLGIEWMRRHLAPDYRVHIISF  
 KDPNPMHIDATFNIIGPGIVLSNPDRPCHQIDLFKKAGWTIITPPTPIIPDDHPLWMSSK  
 WLSMNVLMMLDEKRVMVDANEVPIQKMFELGITTIKVNIRNANSLGGGFHCWTCDV  
 RRRGTLQSYLD

**Purity** >90% by SDS-PAGE

**Applications** SDS-PAGE

**Storage** Can be stored at +2 centigrade to +8 centigrade for 1 week. For long term storage, aliquot and store at -20 centigrade to -80 centigrade. Avoid repeated freezing and thawing cycles.

**Concentration** 1mg/ml (determined by Bradford assay)

## GENE INFORMATION

**Gene Name** GATM

**Official Symbol** GATM

**Synonyms** AT; AGAT; CCDS3

**Gene ID** 2628

**mRNA Refseq** NM\_001482.3

**Protein Refseq** NP\_001473.1

**MIM** 602360

 Tel: 1-631-559-9269 1-516-512-3133

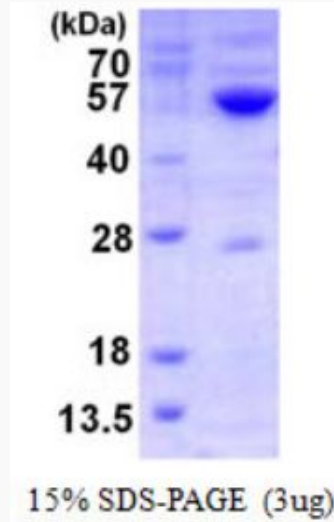
 Email: [info@creative-biomart.com](mailto:info@creative-biomart.com)  Fax: 1-631-938-8127

 45-1 Ramsey Road, Shirley, NY 11967, USA

UniProt ID

P50440

SDS-PAGE of GATM-1925H



 Tel: 1-631-559-9269 1-516-512-3133

 Email: [info@creative-biomart.com](mailto:info@creative-biomart.com)  Fax: 1-631-938-8127

 45-1 Ramsey Road, Shirley, NY 11967, USA