

## Recombinant Human GATM Protein, GST-tagged

Cat. No. GATM-4761H Lot. No. (See product label)

### SPECIFICATION

<b>Product Overview</b>	Human GATM full-length ORF ( NP_001473.1, 1 a.a. - 423 a.a.) recombinant protein with GST-tag at N-terminal.
<b>Species</b>	Human
<b>Source</b>	Wheat Germ
<b>Description</b>	This gene encodes a mitochondrial enzyme that belongs to the amidinotransferase family. This enzyme is involved in creatine biosynthesis, whereby it catalyzes the transfer of a guanido group from L-arginine to glycine, resulting in guanidinoacetic acid, the immediate precursor of creatine. Mutations in this gene cause arginine:glycine amidinotransferase deficiency, an inborn error of creatine synthesis characterized by mental retardation, language impairment, and behavioral disorders. [provided by RefSeq]
<b>Molecular Mass</b>	74.9 kDa
<b>AA Sequence</b>	MLRVRCLRGGSRGAEAVHYIGSRLGRTLGTGWVQRTFQSTQAATASSRNSCAADDK ATEPLPKDCPVSSYNEWDPLEEVIVGRAENACVPPFTIEVKANTYEKYWPFYQKQG GHYFPKDHLKKAIAEIEEMCNILKTEGVTVRRPDPIDWSLKYKTPDFESTGLYSAMP RDILIVVGNEIIEAPMAWRSRFFEYRAYRSIIKDYFHRGAKWTTAPKPTMADELYNQD YPIHSVEDRHKLAAQGKFVTTEFEPCFDAADFIRAGRDIFAQRSQVTNYLGIEWMRR HLAPDYRVHIISFKDPNPMHIDATFNIIGPGIVLSNPDRPCHQIDLFKKAGWTIITPPTPI IPDDHPLWMSSKWLSMNVLMLDEKRVMDANEVPIQKMFELGITTIVNIRNANSL

 Tel: 1-631-559-9269 1-516-512-3133

 Email: [info@creative-biomart.com](mailto:info@creative-biomart.com)  Fax: 1-631-938-8127

 45-1 Ramsey Road, Shirley, NY 11967, USA

GGGFHCWTCDVRRRGTLQSYLD

**Applications**

Enzyme-linked Immunoabsorbent Assay  
 Western Blot (Recombinant protein)  
 Antibody Production  
 Protein Array

**Notes**

Best use within three months from the date of receipt of this protein.

**Storage**

Store at -80 centigrade. Aliquot to avoid repeated freezing and thawing.

**Storage Buffer**

50 mM Tris-HCl, 10 mM reduced Glutathione, pH=8.0 in the elution buffer.

**GENE INFORMATION**

**Gene Name**

[GATM glycine amidinotransferase \(L-arginine:glycine amidinotransferase\) \[ Homo sapiens \]](#)

**Official Symbol**

[GATM](#)

**Synonyms**

GATM; glycine amidinotransferase (L-arginine:glycine amidinotransferase); glycine amidinotransferase, mitochondrial; AGAT; transamidinase; L-arginine:glycine amidinotransferase; AT;

**Gene ID**

[2628](#)

**mRNA Refseq**

[NM\\_001482](#)

**Protein Refseq**

[NP\\_001473](#)

**MIM**

[602360](#)

 Tel: 1-631-559-9269 1-516-512-3133

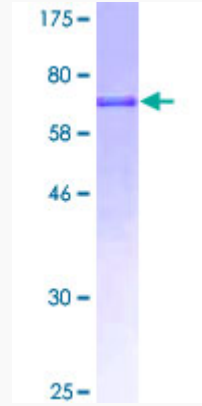
 Email: [info@creative-biomart.com](mailto:info@creative-biomart.com)  Fax: 1-631-938-8127

 45-1 Ramsey Road, Shirley, NY 11967, USA

UniProt ID

P50440

Quality Control  
Testing



12.5% SDS-PAGE Stained with Coomassie Blue.

 Tel: 1-631-559-9269 1-516-512-3133

 Email: [info@creative-biomart.com](mailto:info@creative-biomart.com)  Fax: 1-631-938-8127

 45-1 Ramsey Road, Shirley, NY 11967, USA