

Recombinant Human GATM Protein, Myc/DDK-tagged, C13 and N15-labeled

Cat. No. GATM-5393H **Lot. No.** (See product label)

SPECIFICATION

Product Overview

GATM MS Standard C13 and N15-labeled recombinant protein (NP_001473) with a C-terminal MYC/DDK tag, was expressed in HEK293 cells.

Species

Human

Source

HEK293

Description

This gene encodes a mitochondrial enzyme that belongs to the amidinotransferase family. This enzyme is involved in creatine biosynthesis, whereby it catalyzes the transfer of a guanido group from L-arginine to glycine, resulting in guanidinoacetic acid, the immediate precursor of creatine. Mutations in this gene cause arginine:glycine amidinotransferase deficiency, an inborn error of creatine synthesis characterized by cognitive disability, language impairment, and behavioral disorders.

Molecular Mass

48.5 kDa

AA Sequence

MLRVRCLRGGSRGAEAVHYIGSRLGRTLGTGWVQRTFQSTQAATASSRNSCAADDK
ATEPLPKDCPVSSYNEWDPLEEVIVGRAENACVPPFTIEVKANTYEKYWPFFYQKQG
GHYFPKDHLKKAIAEIEEMCNILKTEGVTVRRPDPIDWSLKYKTPDFESTGLYSAMP
RDILIVVGNEIIEAPMAWRSRFFEYRAYRSIIKDYFHRGAKWTTAPKPTMADELYNQD
YPIHSVEDRHKLAAQGGKFTTEFEPCFDAADFIRAGRDIFAQRSQVTNYLGIEWMRR
HLAPDYRVHIISFKDPNPMHIDATFNIIGPGIVLSNPDRPCHQIDLFFKAGWTIITPPTPI
IPDDHPLWMSSKWLSMNVLMLDEKRVMDANEVPIQKMFELGITTIVNIRNANSL

 Tel: 1-631-559-9269 1-516-512-3133

 Email: info@creative-biomart.com  Fax: 1-631-938-8127

 45-1 Ramsey Road, Shirley, NY 11967, USA

GGGFHCWTCDVRRRGTLQSYLDTRTRPLEQKLISEEDLAANDILDYKDDDDKV

Purity > 80% as determined by SDS-PAGE and Coomassie blue staining

Stability Stable for 3 months from receipt of products under proper storage and handling conditions.

Storage Store at -80 centigrade. Avoid repeated freeze-thaw cycles.

Concentration 50 µg/mL as determined by BCA

Storage Buffer 100 mM glycine, 25 mM Tris-HCl, pH 7.3.

GENE INFORMATION

Gene Name [GATM glycine amidinotransferase \[Homo sapiens \(human\) \]](#)

Official Symbol [GATM](#)

Synonyms GATM; glycine amidinotransferase (L-arginine:glycine amidinotransferase); glycine amidinotransferase, mitochondrial; AGAT; transamidinase; L-arginine:glycine amidinotransferase; AT;

Gene ID [2628](#)

mRNA Refseq [NM_001482](#)

Protein Refseq [NP_001473](#)

MIM [602360](#)

 Tel: 1-631-559-9269 1-516-512-3133

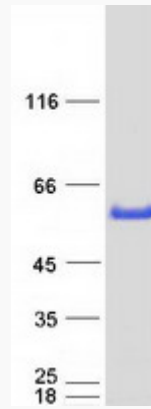
 Email: info@creative-biomart.com  Fax: 1-631-938-8127

 45-1 Ramsey Road, Shirley, NY 11967, USA

UniProt ID

P50440

SDS-PAGE



 Tel: 1-631-559-9269 1-516-512-3133

 Email: info@creative-biomart.com  Fax: 1-631-938-8127

 45-1 Ramsey Road, Shirley, NY 11967, USA