

# Recombinant Full Length Human GATM Protein, C-Flag-tagged

Cat. No. GATM-833HFL Lot. No. (See product label)

## SPECIFICATION

<b>Product Overview</b>	Recombinant Full Length Human GATM Protein, fused to Flag-tag at C-terminus, was expressed in Mammalian cells.
<b>Species</b>	Human
<b>Source</b>	Mammalian Cells
<b>Description</b>	This gene encodes a mitochondrial enzyme that belongs to the amidinotransferase family. This enzyme is involved in creatine biosynthesis, whereby it catalyzes the transfer of a guanido group from L-arginine to glycine, resulting in guanidinoacetic acid, the immediate precursor of creatine. Mutations in this gene cause arginine:glycine amidinotransferase deficiency, an inborn error of creatine synthesis characterized by cognitive disability, language impairment, and behavioral disorders.
<b>Form</b>	25 mM Tris HCl, pH 7.3, 100 mM glycine, 10% glycerol.
<b>Molecular Mass</b>	44.2 kDa
<b>AA Sequence</b>	MLRVRCLRGGSRGAEAVHYIGSRLGRTLGTGWVQRTFQSTQAATASSRNSCAADDK ATEPLPKDCPVSSYN EWDPLEEVIVGRAENACVPPFTIEVKANTYEKYWPFYQKQG GHYFPKDHLKKAVAEIEEMCNILKTEGVT VRRPDPIDWSLKYKTPDFESTGLYSAMP RDILIVVGNEIIEAPMAWRSRFFEYRAYRSIIKDYFHRGAKW TTAPKPTMADELYNQD YPIHSVEDRHKLAAQGKFVTTEFEPFCFDAADFIRAGRDIFAQRSQVTNYLGIEW MRR HLAPDYRVHIISFKDPNPMHIDATFNIIGPGIVLSNPDRPCHQIDLFFKAGWTIITPPTPI IPDDHP LWMSSKWLSMNVMLMLDEKRVMDANEVPIQKMFEEKLGITTIKVNIRNANSL

 Tel: 1-631-559-9269 1-516-512-3133

 Email: [info@creative-biomart.com](mailto:info@creative-biomart.com)  Fax: 1-631-938-8127

 45-1 Ramsey Road, Shirley, NY 11967, USA

	GGGFHCWTCDVRRRGTLQS YLDTRTRPLEQKLISEEDLAANDILDYKDDDDKV
<b>Purity</b>	> 80% as determined by SDS-PAGE and Coomassie blue staining.
<b>Stability</b>	Stable for 12 months from the date of receipt of the product under proper storage and handling conditions. Avoid repeated freeze-thaw cycles.
<b>Storage</b>	Store at -80 centigrade.
<b>Concentration</b>	>50 ug/mL as determined by microplate BCA method.
<b>Preparation</b>	Recombinant protein was captured through anti-DDK affinity column followed by conventional chromatography steps.
<b>Protein Families</b>	Druggable Genome
<b>Protein Pathways</b>	Arginine and proline metabolism, Glycine, serine and threonine metabolism, Metabolic pathways
<b>Full Length</b>	Full L.
<b>GENE INFORMATION</b>	
<b>Gene Name</b>	<a href="#">GATM glycine amidinotransferase [ Homo sapiens (human) ]</a>
<b>Official Symbol</b>	<a href="#">GATM</a>
<b>Synonyms</b>	AT; AGAT; CCDS3; FRTS1
<b>Gene ID</b>	<a href="#">2628</a>

 Tel: 1-631-559-9269 1-516-512-3133

 Email: [info@creative-biomart.com](mailto:info@creative-biomart.com)  Fax: 1-631-938-8127

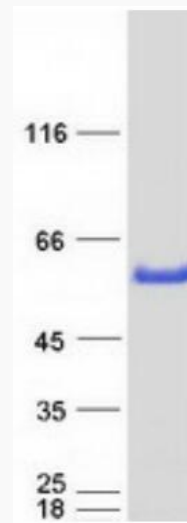
 45-1 Ramsey Road, Shirley, NY 11967, USA

mRNA Refseq [NM\\_001482.3](#)

Protein Refseq [NP\\_001473.1](#)

MIM [602360](#)

UniProt ID [P50440](#)



Coomassie blue staining of purified GATM protein.

 Tel: 1-631-559-9269 1-516-512-3133

 Email: [info@creative-biomart.com](mailto:info@creative-biomart.com)  Fax: 1-631-938-8127

 45-1 Ramsey Road, Shirley, NY 11967, USA