

Recombinant Human GATSL1 Protein, Myc/DDK-tagged, C13 and N15-labeled

Cat. No. GATSL1-6422H **Lot. No.** (See product label)

SPECIFICATION

Product Overview	GATSL1 MS Standard C13 and N15-labeled recombinant protein (NP_001138535) with a C-terminal MYC/DDK tag, was expressed in HEK293 cells.
Species	Human
Source	HEK293
Description	CASTOR2 (Cytosolic Arginine Sensor For MTORC1 Subunit 2) is a Protein Coding gene. Diseases associated with CASTOR2 include Spinal Cord Glioma and Spinal Cancer. Among its related pathways are mTOR signaling pathway (KEGG). An important paralog of this gene is CASTOR1.
Molecular Mass	35.9 kDa
AA Sequence	MELHILEHRLQVASVANESIPLFTYGLIKLAFLLSSKTRCKFFSLTETPEDYTIIVDEEGF LLEPSSSEHLSVADATWLALNVVSGGGSFSSSQPIGVTKIAKSVIAPLADQNISVFMLS TYQTDFILVRERDLPFVTHLSSEFTILRVNGETVAAENLGITNGFVKPKLVQRPVIH PLSSPSNRFVCTSLDPDTLPAVATLLMDVMFYNSGVKDPMATGDDCGHIRFFSFSLI EGYISLVMDVQTQQRFPNLLFTSASGELWKMVRIGGQPLGFDECGIVAQISEPLAA ADIPAYYISTFKFDHALVPEENINGVISALKV/SQAEKHTRTRPLEQKLISEEDLAANDIL DYKDDDDKV
Purity	> 80% as determined by SDS-PAGE and Coomassie blue staining

 Tel: 1-631-559-9269 1-516-512-3133

 Email: info@creative-biomart.com  Fax: 1-631-938-8127

 45-1 Ramsey Road, Shirley, NY 11967, USA

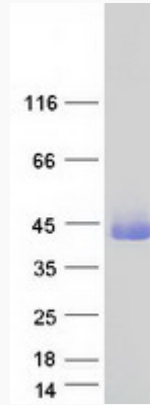
Stability	Stable for 3 months from receipt of products under proper storage and handling conditions.
Storage	Store at -80 centigrade. Avoid repeated freeze-thaw cycles.
Concentration	50 µg/mL as determined by BCA
Storage Buffer	100 mM glycine, 25 mM Tris-HCl, pH 7.3.
GENE INFORMATION	
Gene Name	GATSL1 GATS protein-like 1 [Homo sapiens (human)]
Official Symbol	GATSL1
Synonyms	GATSL1; GATS protein-like 1; MGC182133; MGC182134; MGC183569; GATS protein-like 1; GATS-like protein 1
Gene ID	389523
mRNA Refseq	NM_001145063
Protein Refseq	NP_001138535

 Tel: 1-631-559-9269 1-516-512-3133

 Email: info@creative-biomart.com  Fax: 1-631-938-8127

 45-1 Ramsey Road, Shirley, NY 11967, USA

SDS-PAGE



 Tel: 1-631-559-9269 1-516-512-3133

 Email: info@creative-biomart.com  Fax: 1-631-938-8127

 45-1 Ramsey Road, Shirley, NY 11967, USA