

Recombinant Human GBA Protein, Myc/DDK-tagged, C13 and N15-labeled

Cat. No. GBA-5174H **Lot. No.** (See product label)

SPECIFICATION

Product Overview	GBA MS Standard C13 and N15-labeled recombinant protein (NP_001005741) with a C-terminal MYC/DDK tag, was expressed in HEK293 cells.
Species	Human
Source	HEK293
Description	This gene encodes a lysosomal membrane protein that cleaves the beta-glucosidic linkage of glycosylceramide, an intermediate in glycolipid metabolism. Mutations in this gene cause Gaucher disease, a lysosomal storage disease characterized by an accumulation of glucocerebrosides. A related pseudogene is approximately 12 kb downstream of this gene on chromosome 1. Alternative splicing results in multiple transcript variants.
Molecular Mass	59.7 kDa
AA Sequence	MEFSSPSREECPKPLSRVSIAGSLTGLLLLQAVSWASGARPCIPKSFYSSVVCVC NATYCDSFDPPTFPALGTFSTRYESTRSGRRMELSMGPIQANHTGTGLLLLTLQPEQK FQKVKGFGGAMTDAAALNILALSPPAQNLLLKSYFSEEGIGYNIIRVPMASCDIFSIRTY TYADTPDDFQLHNFSLPEEDTKLKIPLIHRALQLAQRVSLASPWTSPTWLKTNGAV NGKGSLLKGQPGDIYHQTWARYFVKFLDAYAEHKLQFWAVTAENEPSAGLLSGYPF QCLGFTPEHQRFIARDLGPTLANSTHHNVRLLMLDDQRRLLPHWAKVVLTDP EAA KYVHGIAVHWYLDLFLAPAKATLGETHRLFPNTMLFASEACVGSKFWEQSVRLGSDW

 Tel: 1-631-559-9269 1-516-512-3133

 Email: info@creative-biomart.com  Fax: 1-631-938-8127

 45-1 Ramsey Road, Shirley, NY 11967, USA

RGMQYSHSIITNLLYHVVGWTDWNLALNPEGGPNWVRNFVDSPIIVDITKDTFYKQP
 MFYHLGHFSKFIPEGSQRVGLVASQKNDLDAVALMHPDGSAVVVVVLRSSKDVPLTI
 KDPAVGFLETISPGYSIHTYLWRRQTRTRPLEQKLISEEDLAANDILDYKDDDDKV

Purity > 80% as determined by SDS-PAGE and Coomassie blue staining

Stability Stable for 3 months from receipt of products under proper storage and handling conditions.

Storage Store at -80 centigrade. Avoid repeated freeze-thaw cycles.

Concentration 50 µg/mL as determined by BCA

Storage Buffer 100 mM glycine, 25 mM Tris-HCl, pH 7.3.

GENE INFORMATION

Gene Name [GBA glucosylceramidase beta \[Homo sapiens \(human\) \]](#)

Official Symbol [GBA](#)

Synonyms GBA; glucosidase, beta, acid; GLUC, glucosidase, beta; acid (includes glucosylceramidase), glucosylceramidase; glucosylceramidase; GBA1; alglucerase; imiglucerase; acid beta-glucosidase; beta-glucocerebrosidase; lysosomal glucocerebrosidase; D-glucosyl-N-acylsphingosine glucohydrolase; GCB; GLUC;

Gene ID [2629](#)

mRNA Refseq [NM_001005741](#)

Protein Refseq [NP_001005741](#)

 Tel: 1-631-559-9269 1-516-512-3133

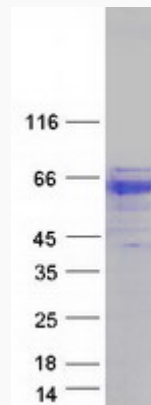
 Email: info@creative-biomart.com  Fax: 1-631-938-8127

 45-1 Ramsey Road, Shirley, NY 11967, USA

MIM 606463

UniProt ID P04062

SDS-PAGE



 Tel: 1-631-559-9269 1-516-512-3133

 Email: info@creative-biomart.com  Fax: 1-631-938-8127

 45-1 Ramsey Road, Shirley, NY 11967, USA