

Recombinant Full Length Human GBA2 Protein, C-Flag-tagged

Cat. No. GBA2-855HFL Lot. No. (See product label)

SPECIFICATION

Product Overview	Recombinant Full Length Human GBA2 Protein, fused to Flag-tag at C-terminus, was expressed in Mammalian cells.
Species	Human
Source	Mammalian Cells
Description	This gene encodes a microsomal beta-glucosidase that catalyzes the hydrolysis of bile acid 3-O-glucosides as endogenous compounds. Studies to determine subcellular localization of this protein in the liver indicated that the enzyme was mainly enriched in the microsomal fraction where it appeared to be confined to the endoplasmic reticulum. This putative transmembrane protein is thought to play a role in carbohydrate transport and metabolism.
Form	25 mM Tris HCl, pH 7.3, 100 mM glycine, 10% glycerol.
Molecular Mass	104.5 kDa
AA Sequence	MGTQDPGNMGTGVPASEQISCAKEDPQVYCPEETGGTKDVQVTDCKSPEDSRPPK ETDCCNPEDSGQLMV SYEGKAMGYQVPPFGWRICLAHEFTEKRKPFQANNVSLSN MIKHIGMGLRYLQWWYRKTHVEKKTPFIDM INSVPLRQIYGCCPLGGIGGGTITRGWR GQFCRWQLNPGMYQHRTVIADQFTVCLRREGQTVYQQVLSLER PSVLRSWNWGL CGYAFYHALYPRAWTVYQLPGQNVTLTCRQITPILPHDYQDSSLPGVGFVWDVEN EGD EALDVSIMFSMRNGLGGDDAPGGLWNEPFCLERSGETVRGLLLHHPTLPNP YTMVAARVTAATTVTHI TAFDPDSTGQQVWQDLLQDGLDQDSSPTGQSTPTQKGVG

 Tel: 1-631-559-9269 1-516-512-3133

 Email: info@creative-biomart.com  Fax: 1-631-938-8127

 45-1 Ramsey Road, Shirley, NY 11967, USA

IAGAVCVSSKLRPRGQCRLEFSLAWDMPRIMFG AKGQVHYRRYTRFFGQDGAAP
 ALSHYALCRYAEWEERISAWQSPVDDRSLPAWYKSALFNELYFLADG GTVWLEVL
 EDSLPEELGRNMCHLRPTLRDYGRFGYLEGQEYRMYNTYDVHFYASFALIMLWPKL
 ELSLQY DMALATLREDLTRRRYLMSGVMAPVKRRNVIPHDIGDPDDEPWLRVNAYL
 IHDTADWKDLNLKFVLQVYR DYYLTGDQNFLKDMWPVCLAVMESEMKFDDKHDGL
 IENGGYADQTYDGVVTTGPSAYCGGLWLAAVAVMV QMAALCGAQDIQDKFSSILS
 RGQEAYERLLWNGRYNYDSSSRPQRSVMSDQCAGQWFLKACGLGEGDT EVF
 PTQHVVRLQTIFELNVQAFAGGAMGAVNGMQPHGVDPKSSVQSDEVWVGVVYG
 LAATMIQEGLTWE GFQTAEGCYRTVWERLGLAFQTPEAYCQQRVFRSLAYMRPLSI
 WAMQLALQQQHKKASWPKVKQGTGLR
 TGPMFGPKEAMANLSPETRTRPLEQKLISEEDLAANDILDYKDDDDKV

Purity > 80% as determined by SDS-PAGE and Coomassie blue staining.

Stability Stable for 12 months from the date of receipt of the product under proper storage and handling conditions. Avoid repeated freeze-thaw cycles.

Storage Store at -80 centigrade.

Concentration >50 ug/mL as determined by microplate BCA method.

Preparation Recombinant protein was captured through anti-DDK affinity column followed by conventional chromatography steps.

Protein Families Druggable Genome

Full Length Full L.

GENE INFORMATION

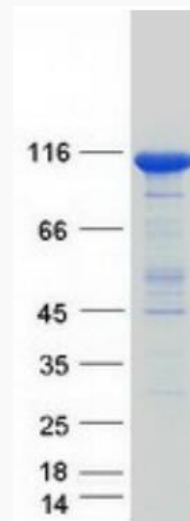
Gene Name [GBA2 glucosylceramidase beta 2 \[Homo sapiens \(human\) \]](#)

 Tel: 1-631-559-9269 1-516-512-3133

 Email: info@creative-biomart.com  Fax: 1-631-938-8127

 45-1 Ramsey Road, Shirley, NY 11967, USA

Official Symbol	GBA2
Synonyms	AD035; SPG46; NLGase
Gene ID	57704
mRNA Refseq	NM_020944.3
Protein Refseq	NP_065995.1
MIM	609471
UniProt ID	Q9HCG7



Coomassie blue staining of purified GBA2 protein.

 Tel: 1-631-559-9269 1-516-512-3133

 Email: info@creative-biomart.com  Fax: 1-631-938-8127

 45-1 Ramsey Road, Shirley, NY 11967, USA