

## Recombinant Human GBE1 Protein, GST-tagged

Cat. No. GBE1-4771H Lot. No. (See product label)

### SPECIFICATION

|                         |   |
|-------------------------|---|
| <b>Product Overview</b> | Human GBE1 full-length ORF ( AAH12098.1, 1 a.a. - 702 a.a.) recombinant protein with GST-tag at N-terminal.   |
| <b>Species</b>          | Human   |
| <b>Source</b>           | Wheat Germ  |
| <b>Description</b>      | The protein encoded by this gene is a glycogen branching enzyme that catalyzes the transfer of alpha-1,4-linked glucosyl units from the outer end of a glycogen chain to an alpha-1,6 position on the same or a neighboring glycogen chain. Branching of the chains is essential to increase the solubility of the glycogen molecule and, consequently, in reducing the osmotic pressure within cells. Highest level of this enzyme are found in liver and muscle. Mutations in this gene are associated with glycogen storage disease IV (also known as Andersens disease). [provided by RefSeq] |
| <b>Molecular Mass</b>   | 106.8 kDa   |
| <b>AA Sequence</b>      | MAAPMTPAARPEDYEAALNAALADVPELARLLEIDPYLKPYPVDFQRRYKQFSQILK<br>NIGENEGGIDKFSRGYESFGVHRCADGGLYCKEWAPGAEGVFLTGFNGWNPFSY<br>PYKKLDYGKWELYIPPKQNKSVLVPHGSKLKVVITSKSGEILYRISPWAKYVVREGDN<br>VNYDWIHWDPESYEFKHSRPPKPRSLRIYESHVGISSHEGKVASYKHFTCNVLPRI<br>KGLGYNCIQLMAIMEHAYYASFGYQITSFFAASSRYGSPEELQELVDTAHSMGIIVLL<br>DVVHSHASKNSADGLNMFDTDSCYFHSGPRGTHDLWDSRLFAYSSWEVLRFLLS   |

 Tel: 1-631-559-9269 1-516-512-3133

 Email: [info@creative-biomart.com](mailto:info@creative-biomart.com)  Fax: 1-631-938-8127

 45-1 Ramsey Road, Shirley, NY 11967, USA

NIRWWLEEYRFDGFRFDGVTSMYHHHGVGQGFSGDYSEYFGLQVDEDALTYLML  
 ANHLVHTLCPDSITIAEDVSGMPALCSPISQGGGGFDYRLAMAIPDKWIQLLKEFKDE  
 DWNMGDIVYTLTNRRYLEKCIAYAESHQALVGDKSLAFWLMDAEMYTNMSVLTPF  
 TPVIDRGIQLHKMIRLITHGLGGEGYLNFMGNEFGHPEWLDFFPRKGNNESYHYARR  
 QFHLLTDDDLLRYKFLNNFDRDMNRLEERYGWLAAPQAYVSEKHEGNKIIAFERAGLL  
 FIFNFHPSKSYTDYRVGTALPGKFKIVLDSAAEYGGHQRLDHSTDFEFAFEHNGR  
 PYSLLVYIPSRVALILQNVDLPN

|                       |   |
|-----------------------|---|
| <b>Applications</b>   | Enzyme-linked Immunoabsorbent Assay<br>Western Blot (Recombinant protein)<br>Antibody Production<br>Protein Array |
| <b>Notes</b>          | Best use within three months from the date of receipt of this protein.  |
| <b>Storage</b>        | Store at -80 centigrade. Aliquot to avoid repeated freezing and thawing.  |
| <b>Storage Buffer</b> | 50 mM Tris-HCl, 10 mM reduced Glutathione, pH=8.0 in the elution buffer.  |

## GENE INFORMATION

|                        |   |
|------------------------|---|
| <b>Gene Name</b>       | GBE1 glucan (1,4-alpha-), branching enzyme 1 [ Homo sapiens ]   |
| <b>Official Symbol</b> | GBE1  |
| <b>Synonyms</b>        | GBE1; glucan (1,4-alpha-), branching enzyme 1; 1,4-alpha-glucan-branching enzyme; Andersen disease; glycogen branching enzyme; glycogen storage disease type IV; brancher enzyme; glycogen-branching enzyme; amylo-(1,4 to 1,6) transglucosidase; amylo-(1,4 to 1,6) transglycosylase; GBE; |
| <b>Gene ID</b>         | 2632  |

 Tel: 1-631-559-9269 1-516-512-3133

 Email: [info@creative-biomart.com](mailto:info@creative-biomart.com)  Fax: 1-631-938-8127

 45-1 Ramsey Road, Shirley, NY 11967, USA

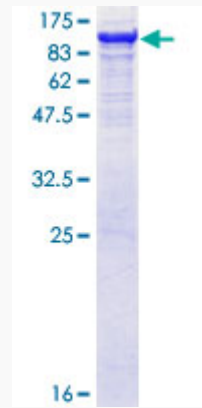
mRNA Refseq [NM\\_000158](#)

Protein Refseq [NP\\_000149](#)

MIM [607839](#)

UniProt ID [Q04446](#)

**Quality Control  
Testing**



12.5% SDS-PAGE Stained with Coomassie Blue.

 Tel: 1-631-559-9269 1-516-512-3133

 Email: [info@creative-biomart.com](mailto:info@creative-biomart.com)  Fax: 1-631-938-8127

 45-1 Ramsey Road, Shirley, NY 11967, USA