

## Recombinant Human GBF1 Protein, GST-tagged

**Cat. No.** GBF1-4773H    **Lot. No.** (See product label)

### SPECIFICATION

<b>Product Overview</b>	Human GBF1 partial ORF ( NP_004184.1, 101 a.a. - 209 a.a.) recombinant protein with GST-tag at N-terminal.
<b>Species</b>	Human
<b>Source</b>	Wheat Germ
<b>Description</b>	This gene encodes a member of the Sec7 domain family. The encoded protein is a guanine nucleotide exchange factor that regulates the recruitment of proteins to membranes by mediating GDP to GTP exchange. The encoded protein is localized to the Golgi apparatus and plays a role in vesicular trafficking by activating ADP ribosylation factor 1. The encoded protein has also been identified as an important host factor for viral replication. Multiple transcript variants have been observed for this gene. [provided by RefSeq, Dec 2010]
<b>Molecular Mass</b>	37.73 kDa
<b>AA Sequence</b>	THEGTAEGMENMADAVTHARFVGTDPASDEVVLMKILQVLRLLLLTPVGAHLTNESV CEIMQSCFRICFEMRLSELLRKS AEHTLVDMVQLLFTRL P QFKEEPKNYVGT
<b>Applications</b>	Enzyme-linked Immunoabsorbent Assay Western Blot (Recombinant protein) Antibody Production Protein Array

 Tel: 1-631-559-9269    1-516-512-3133

 Email: [info@creative-biomart.com](mailto:info@creative-biomart.com)     Fax: 1-631-938-8127

 45-1 Ramsey Road, Shirley, NY 11967, USA

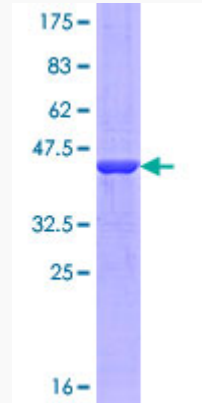
<b>Notes</b>	Best use within three months from the date of receipt of this protein.
<b>Storage</b>	Store at -80 centigrade. Aliquot to avoid repeated freezing and thawing.
<b>Storage Buffer</b>	50 mM Tris-HCl, 10 mM reduced Glutathione, pH=8.0 in the elution buffer.
<b>GENE INFORMATION</b>	
<b>Gene Name</b>	GBF1 golgi brefeldin A resistant guanine nucleotide exchange factor 1 [ Homo sapiens ]
<b>Official Symbol</b>	GBF1
<b>Synonyms</b>	GBF1; golgi brefeldin A resistant guanine nucleotide exchange factor 1; golgi specific brefeldin A resistance factor 1; Golgi-specific brefeldin A-resistance guanine nucleotide exchange factor 1; ARF1GEF; KIAA0248; BFA-resistant GEF 1; FLJ21263; FLJ21500; MGC134877; MGC134878;
<b>Gene ID</b>	8729
<b>mRNA Refseq</b>	NM_001199378
<b>Protein Refseq</b>	NP_001186307
<b>MIM</b>	603698
<b>UniProt ID</b>	Q92538

 Tel: 1-631-559-9269 1-516-512-3133

 Email: [info@creative-biomart.com](mailto:info@creative-biomart.com)  Fax: 1-631-938-8127

 45-1 Ramsey Road, Shirley, NY 11967, USA

**Quality Control  
Testing**



12.5% SDS-PAGE Stained with Coomassie Blue.

 Tel: 1-631-559-9269 1-516-512-3133

 Email: [info@creative-biomart.com](mailto:info@creative-biomart.com)  Fax: 1-631-938-8127

 45-1 Ramsey Road, Shirley, NY 11967, USA