

# Recombinant Full Length Human GBP2 Protein, C-Flag-tagged

Cat. No. GBP2-1800HFL Lot. No. (See product label)

## SPECIFICATION

<b>Product Overview</b>	Recombinant Full Length Human GBP2 Protein, fused to Flag-tag at C-terminus, was expressed in Mammalian cells.
<b>Species</b>	Human
<b>Source</b>	Mammalian Cells
<b>Description</b>	This gene belongs to the guanine-binding protein (GBP) family, which includes interferon-induced proteins that can bind to guanine nucleotides (GMP, GDP and GTP). The encoded protein is a GTPase which hydrolyzes GTP, predominantly to GDP. The protein may play a role as a marker of squamous cell carcinomas.
<b>Form</b>	25 mM Tris HCl, pH 7.3, 100 mM glycine, 10% glycerol.
<b>Molecular Mass</b>	67 kDa
<b>AA Sequence</b>	<p>MAPEINLPGPMSLIDNTKGQLVVNPEALKILSAITQPVVVVAIVGLYRTGKSYLMNKLA  GKKNQFSLGST VKSHTKGIWMWCVPHPKKPEHTLVLLDTEGLGDIEKGDNENDSWI  FALAILLSSTFVYNSMGTINQQAMD QLHYVTELTDRIKANSSPGNNSVDDSDADFVSF  FPAFVWTLRDFTLELEVDGEPITADDYLELSLKLKRGKT DKKSFSFNDPRLCIRKFFPK  RKCFVFDWPAPKKYLAHLEQLKEEELNPDFIEQVAEFCSYILSHSNVKTLL SGGIPVN  GPRLESLVLTYVNAISSGDLPCRENAVLALAQIENSAAVEKAI AHYEQQMGQKVQLP  TETLQE LLDLHRDSEREAIEVFMKNSFKDVDQMFQRKLGAQLEARRDDFCKQNSK  ASSDCCMALLQDIFGPLEEDV KQGTFSKPGGYRLFTQKLQELKNKYYQVPRKGIQA  KEVLKKYLESKEDVADALLQTDQSLSEKEKAIEVE RIKAESAEAAKKMLEEIQKKNEE</p>

 Tel: 1-631-559-9269 1-516-512-3133

 Email: [info@creative-biomart.com](mailto:info@creative-biomart.com)  Fax: 1-631-938-8127

 45-1 Ramsey Road, Shirley, NY 11967, USA

MMEQKEKSYQEHVKQLTEKMERDRAQLMAEQEKTLLKQEQERLLK EGFENESK  
RLQKDIWDIQMRSKSLEPICNIL TRTRPLEQKLISEEDLAANDILDYKDDDDKV

**Purity** > 80% as determined by SDS-PAGE and Coomassie blue staining.

**Stability** Stable for 12 months from the date of receipt of the product under proper storage and handling conditions. Avoid repeated freeze-thaw cycles.

**Storage** Store at -80 centigrade.

**Concentration** >50 ug/mL as determined by microplate BCA method.

**Preparation** Recombinant protein was captured through anti-DDK affinity column followed by conventional chromatography steps.

**Full Length** Full L.

## GENE INFORMATION

**Gene Name** [GBP2 guanylate binding protein 2 \[ Homo sapiens \(human\) \]](#)

**Official Symbol** [GBP2](#)

**Gene ID** [2634](#)

**mRNA Refseq** [NM\\_004120.5](#)

**Protein Refseq** [NP\\_004111.2](#)

**MIM** [600412](#)

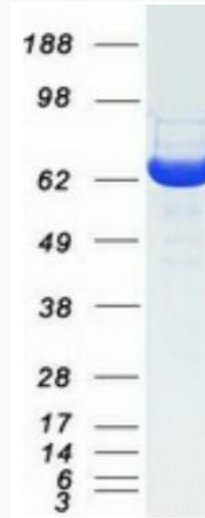
 Tel: 1-631-559-9269 1-516-512-3133

 Email: [info@creative-biomart.com](mailto:info@creative-biomart.com)  Fax: 1-631-938-8127

 45-1 Ramsey Road, Shirley, NY 11967, USA

UniProt ID

P32456



Coomassie blue staining of purified GBP2 protein.

 Tel: 1-631-559-9269 1-516-512-3133

 Email: [info@creative-biomart.com](mailto:info@creative-biomart.com)  Fax: 1-631-938-8127

 45-1 Ramsey Road, Shirley, NY 11967, USA