

Recombinant Human GBP2 protein(100-259aa), His-tagged

Cat. No. GBP2-3829H Lot. No. (See product label)

SPECIFICATION

Product Overview	Recombinant Human GBP2 protein(P32456)(100-259aa), fused with N-terminal His tag, was expressed in E. coli.
Species	Human
Source	E.coli
ProteinLength	100-259aa
Form	If the delivery form is liquid, the default storage buffer is Tris/PBS-based buffer, 5%-50% glycerol. If the delivery form is lyophilized powder, the buffer before lyophilization is Tris/PBS-based buffer, 6% Trehalose, pH 8.0.
Molecular Mass	22.4 kDa
Purity	Greater than 85% as determined by SDS-PAGE.
Storage	Store at -20°C/-80°C upon receipt, aliquoting is necessary for mutiple use. Avoid repeated freeze-thaw cycles.
Reconstitution	We recommend that this vial be briefly centrifuged prior to opening to bring the contents to the bottom. Please reconstitute protein in deionized sterile water to a concentration of 0.1-1.0 mg/mL. We recommend to add 5-50% of glycerol (final concentration) and aliquot for long-term storage at -20°C/-80°C.

 Tel: 1-631-559-9269 1-516-512-3133

 Email: info@creative-biomart.com  Fax: 1-631-938-8127

 45-1 Ramsey Road, Shirley, NY 11967, USA



AA Sequence GLGDIEKGDNENDSWIFALAILLSSTFVYNSMGTINQQAMDQLHYVTELTDRIKANSS
PGNNSVDDSDADFVSFFPAFVWTLRDFTLLELEVDGEPITADDYLELSLKLKRGTDKKS
KSFNDPRLCIRKFFPKRKCFVFDWPAPKKYLAHLEQLKEEELNPD

GENE INFORMATION

Gene Name GBP2 guanylate binding protein 2, interferon-inducible [Homo sapiens]

Official Symbol GBP2

Synonyms GBP2; guanylate binding protein 2, interferon-inducible; interferon-induced guanylate-binding protein 2; GBP-2; huGBP-2; GTP-binding protein 2; guanine nucleotide-binding protein 2; DKFZp451C2311;

Gene ID 2634

mRNA Refseq NM_004120

Protein Refseq NP_004111

MIM 600412

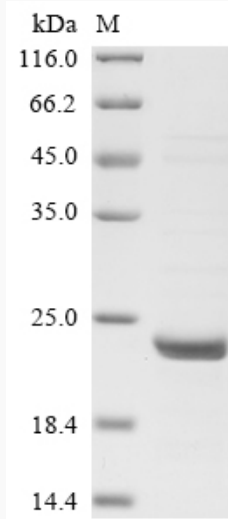
UniProt ID P32456

 Tel: 1-631-559-9269 1-516-512-3133

 Email: info@creative-biomart.com  Fax: 1-631-938-8127

 45-1 Ramsey Road, Shirley, NY 11967, USA

SDS-PAGE



 Tel: 1-631-559-9269 1-516-512-3133

 Email: info@creative-biomart.com  Fax: 1-631-938-8127

 45-1 Ramsey Road, Shirley, NY 11967, USA