

Recombinant Human GBP6 Protein, Myc/DDK-tagged, C13 and N15-labeled

Cat. No. GBP6-2176H **Lot. No.** (See product label)

SPECIFICATION

| | |
|-------------------------|---|
| Product Overview | GBP6 MS Standard C13 and N15-labeled recombinant protein (NP_940862) with a C-terminal MYC/DDK tag, was expressed in HEK293 cells. |
| Species | Human |
| Source | HEK293 |
| Description | Guanylate-binding proteins, such as GBP6, are induced by interferon and hydrolyze GTP to both GDP and GMP. |
| Molecular Mass | 72.4 kDa |
| AA Sequence | <p>MESGPKMLAPVCLVENNNEQLLVNQQAIIQILEKISQPVVVVAIVGLYRTGKSYLMNHL AGQNHGFPLGSTVQSETKGIWMWCVPHPSKPNHTLVLLDTEGLGDVEKGDPKNDS WIFALAVLLCSTFVYNSMSTINHQALEQLHYVTELTELIKAKSSPRPDGVEDSTEFVS FFPDFLWTVRDFTLELKLNGHPITEDEYLENALKLIQGNPRVQTSNFPRECIRFFP KRKCFVFDRPTNDKDLLANIEKVSEKQLDPKFQEQTNIFCSYIFTHARTKTLREGITVT GNRLGTLAVTYVEAINSGAVPCLENAVITLAQRENSAAVQRASDYYSQMAQRVKF PTDTLQELLDVHAACEREAI AIFMEHSFKDENQEFQKKFMETTMNKKGDFLLQNEES SVQYCQAKLNELSKGLMESISAGSFSVPGGHKLYMETKERIEQDYWQVPRKGVKAK EVFQRFLESQMVIEESILQSDKALTDREKAVAVDRAKKEAAEKEQELLKQKLQEQQQ QMEAQVKSRENIAQLKEKLMERHLLREQIMMLEHTQKVQNDWLHEGFKKKYE EMNAEISQFKRMIDTTKNDDTPWIARTLDNLADELTAILSAPAKLIGHGVKGVSSLFKK</p> |

 Tel: 1-631-559-9269 1-516-512-3133

 Email: info@creative-biomart.com  Fax: 1-631-938-8127

 45-1 Ramsey Road, Shirley, NY 11967, USA



HKLPFTRTRPLEQKLISEEDLAANDILDYKDDDDKV

Purity > 80% as determined by SDS-PAGE and Coomassie blue staining

Stability Stable for 3 months from receipt of products under proper storage and handling conditions.

Storage Store at -80 centigrade. Avoid repeated freeze-thaw cycles.

Concentration 50 µg/mL as determined by BCA

Storage Buffer 100 mM glycine, 25 mM Tris-HCl, pH 7.3.

GENE INFORMATION

Gene Name [GBP6 guanylate binding protein family member 6 \[Homo sapiens \(human\) \]](#)

Official Symbol [GBP6](#)

Synonyms GBP6; guanylate binding protein family, member 6; guanylate-binding protein 6; DKFZp686G0786; GBP-6; GTP-binding protein 6; guanine nucleotide-binding protein 6; FLJ39135;

Gene ID [163351](#)

mRNA Refseq [NM_198460](#)

Protein Refseq [NP_940862](#)

MIM [612467](#)

Tel: 1-631-559-9269 1-516-512-3133

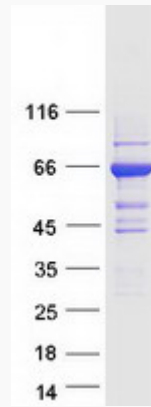
Email: info@creative-biomart.com Fax: 1-631-938-8127

45-1 Ramsey Road, Shirley, NY 11967, USA

UniProt ID

Q6ZN66

SDS-PAGE



 Tel: 1-631-559-9269 1-516-512-3133

 Email: info@creative-biomart.com  Fax: 1-631-938-8127

 45-1 Ramsey Road, Shirley, NY 11967, USA