

## Recombinant Human GBX2 Protein, GST-tagged

Cat. No. GBX2-4784H Lot. No. (See product label)

### SPECIFICATION

<b>Product Overview</b>	Human GBX2 partial ORF (NP_001476.2, 141 a.a. - 230 a.a.) recombinant protein with GST tag at N-terminal.
<b>Species</b>	Human
<b>Source</b>	Wheat Germ
<b>ProteinLength</b>	141-230 a.a.
<b>Description</b>	GBX2 (Gastrulation Brain Homeobox 2) is a Protein Coding gene. Diseases associated with GBX2 include Velocardiofacial Syndrome. Among its related pathways are Embryonic and Induced Pluripotent Stem Cell Differentiation Pathways and Lineage-specific Markers and Neural Crest Differentiation. GO annotations related to this gene include transcription factor activity, sequence-specific DNA binding and sequence-specific DNA binding. An important paralog of this gene is GBX1.
<b>Molecular Mass</b>	35.53 kDa
<b>AA Sequence</b>	AEALQADAEDGKGFLAKEGSLLAFAAETVQASLVGAVRGQGKDESKVEDDPKGGK EESFSLESVDYSSDDNLTGQAAHKEEDPGHALEE
<b>Applications</b>	Enzyme-linked Immunoabsorbent Assay Western Blot (Recombinant protein) Antibody Production

 Tel: 1-631-559-9269 1-516-512-3133

 Email: [info@creative-biomart.com](mailto:info@creative-biomart.com)  Fax: 1-631-938-8127

 45-1 Ramsey Road, Shirley, NY 11967, USA

**Protein Array**

<b>Notes</b>	Best use within three months from the date of receipt of this protein.
<b>Storage</b>	Store at -80 centigrade. Aliquot to avoid repeated freezing and thawing.
<b>Storage Buffer</b>	50 mM Tris-HCl, 10 mM reduced Glutathione, pH=8.0 in the elution buffer.

**GENE INFORMATION**

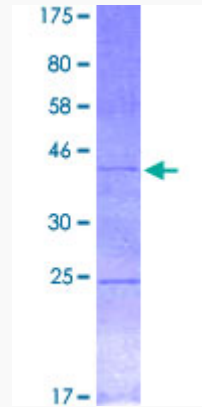
<b>Gene Name</b>	GBX2 gastrulation brain homeobox 2 [ Homo sapiens ]
<b>Official Symbol</b>	GBX2
<b>Synonyms</b>	GBX2; gastrulation brain homeobox 2; gastrulation brain homeo box 2; homeobox protein GBX-2; gastrulation and brain-specific homeobox protein 2;
<b>Gene ID</b>	2637
<b>mRNA Refseq</b>	NM_001485
<b>Protein Refseq</b>	NP_001476
<b>MIM</b>	601135
<b>UniProt ID</b>	P52951

 Tel: 1-631-559-9269 1-516-512-3133

 Email: [info@creative-biomart.com](mailto:info@creative-biomart.com)  Fax: 1-631-938-8127

 45-1 Ramsey Road, Shirley, NY 11967, USA

**Quality Control  
Testing**



12.5% SDS-PAGE Stained with Coomassie Blue

 Tel: 1-631-559-9269 1-516-512-3133

 Email: [info@creative-biomart.com](mailto:info@creative-biomart.com)  Fax: 1-631-938-8127

 45-1 Ramsey Road, Shirley, NY 11967, USA