

# Recombinant Full Length Human GC Protein, C-Flag-tagged

Cat. No. GC-1254HFL Lot. No. (See product label)

## SPECIFICATION

<b>Product Overview</b>	Recombinant Full Length Human GC Protein, fused to Flag-tag at C-terminus, was expressed in Mammalian cells.
<b>Species</b>	Human
<b>Source</b>	Mammalian Cells
<b>Description</b>	The protein encoded by this gene belongs to the albumin gene family. It is a multifunctional protein found in plasma, ascitic fluid, cerebrospinal fluid and on the surface of many cell types. It binds to vitamin D and its plasma metabolites and transports them to target tissues. Alternatively spliced transcript variants encoding different isoforms have been found for this gene.
<b>Form</b>	25 mM Tris HCl, pH 7.3, 100 mM glycine, 10% glycerol.
<b>Molecular Mass</b>	51.1 kDa
<b>AA Sequence</b>	MKRVLVLLLAFAFGHALERGRDYEKKNKVCKEFSLGKEDFTSLSLVLYSRKFPSGTF EQVSQLVKEVVSL TEACCAEGADPDCYDTRTSALSAKSCESNSPPFVHPGTAECC TKEGLERKLCMAALKHQPQEFPTYVEPT NDEICEAFRKDPKEYANQFMWEYSTNY GQAPLSLLVSYTKSYLSMVGSCCTSASPTVCFLKERLQLKHL LTTLSNRVCSQYA AYGEKKSRLSNLIKLAQKVPTADLEDVLPLAEDITNILSKCCESASEDCMAKELPE HT VKLCDNLSTKNSKFEDCCQEKTAMDVFVCTYFMPAAQLPELPDVELPTNKDVCDPG NTKVMKDYTFEL SRRTHLPEVFLSKVLEPTLKSLGECCDVEDSTTCFNAKGPLLKKE LSSFIDKGQELCADYSENTFTEYKK

 Tel: 1-631-559-9269 1-516-512-3133

 Email: [info@creative-biomart.com](mailto:info@creative-biomart.com)  Fax: 1-631-938-8127

 45-1 Ramsey Road, Shirley, NY 11967, USA

KLAERLKAKLPDATPTELAKLVNKRSDFASNCCSINSPPLYCDSEIDAELKNILTRTRP  
LEQLISEEDLAANDILDYKDDDDKV

<b>Purity</b>	> 80% as determined by SDS-PAGE and Coomassie blue staining.
<b>Stability</b>	Stable for 12 months from the date of receipt of the product under proper storage and handling conditions. Avoid repeated freeze-thaw cycles.
<b>Storage</b>	Store at -80 centigrade.
<b>Concentration</b>	>50 ug/mL as determined by microplate BCA method.
<b>Preparation</b>	Recombinant protein was captured through anti-DDK affinity column followed by conventional chromatography steps.
<b>Protein Families</b>	Secreted Protein
<b>Full Length</b>	Full L.

## GENE INFORMATION

<b>Gene Name</b>	GC GC vitamin D binding protein [ Homo sapiens (human) ]
<b>Official Symbol</b>	GC
<b>Synonyms</b>	DBP; VDB; GRD3; VDBG; VDBP; GcMAF; DBP/GC; Gc-MAF; DBP-maf; HEL-S-51
<b>Gene ID</b>	2638
<b>mRNA Refseq</b>	NM_000583.4

 Tel: 1-631-559-9269 1-516-512-3133

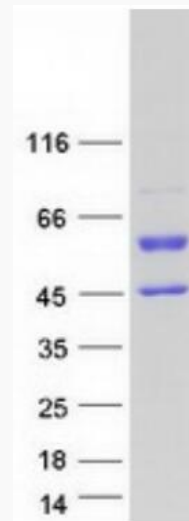
 Email: [info@creative-biomart.com](mailto:info@creative-biomart.com)  Fax: 1-631-938-8127

 45-1 Ramsey Road, Shirley, NY 11967, USA

**Protein Refseq** NP\_000574.2

**MIM** 139200

**UniProt ID** P02774



Coomassie blue staining of purified GC protein.

 Tel: 1-631-559-9269 1-516-512-3133

 Email: [info@creative-biomart.com](mailto:info@creative-biomart.com)  Fax: 1-631-938-8127

 45-1 Ramsey Road, Shirley, NY 11967, USA