

Recombinant Human GCA Protein (Met1-Val139), N-His tagged

Cat. No. GCA-3475H Lot. No. (See product label)

SPECIFICATION

Product Overview	Recombinant human GCA (Met1-Val139) protein fused with the N-His tag was expressed in E. coli.
Species	Human
Source	E.coli
ProteinLength	Met1-Val139
Molecular Mass	17.21 kDa
Purity	>90 % as determined by SDS-PAGE.
Notes	For research use only.
Storage	Use a manual defrost freezer and avoid repeated freeze thaw cycles. Store at 2 to 8 centigrade for one week. Store at -20 to -80 centigrade for twelve months from the date of receipt.
Storage Buffer	0.01M PBS, pH 7.4, 0.02 % NLS
Reconstitution	Reconstitute in sterile water for a stock solution.
Shipping	In general, proteins are provided as lyophilized powder/frozen liquid. They are shipped out with dry ice/blue ice unless customers require otherwise.

 Tel: 1-631-559-9269 1-516-512-3133

 Email: info@creative-biomart.com  Fax: 1-631-938-8127

 45-1 Ramsey Road, Shirley, NY 11967, USA

GENE INFORMATION

Gene Name GCA grancalcin, EF-hand calcium binding protein [Homo sapiens (human)]

Official Symbol GCA

Synonyms GCA; grancalcin, EF-hand calcium binding protein; grancalcin, EF hand calcium binding protein; grancalcin; GCL; grancalcin, penta-EF-hand protein; grancalcin, EF-hand calcium-binding protein;

Gene ID 25801

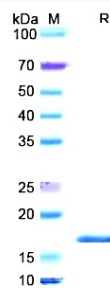
mRNA Refseq NM_012198

Protein Refseq NP_036330

MIM 607030

UniProt ID P28676

SDS-PAGE



Tel: 1-631-559-9269 1-516-512-3133

Email: info@creative-biomart.com Fax: 1-631-938-8127

45-1 Ramsey Road, Shirley, NY 11967, USA