

Recombinant Human GCA Protein, GST-tagged

Cat. No. GCA-4787H **Lot. No.** (See product label)

SPECIFICATION

Product Overview	Human GCA full-length ORF (AAH05214, 1 a.a. - 217 a.a.) recombinant protein with GST-tag at N-terminal.
Species	Human
Source	Wheat Germ
Description	This gene product, grancalcin, is a calcium-binding protein abundant in neutrophils and macrophages. It belongs to the penta-EF-hand subfamily of proteins which includes sorcin, calpain, and ALG-2. Grancalcin localization is dependent upon calcium and magnesium. In the absence of divalent cation, grancalcin localizes to the cytosolic fraction; with magnesium alone, it partitions with the granule fraction; and in the presence of magnesium and calcium, it associates with both the granule and membrane fractions, suggesting a role for grancalcin in granule-membrane fusion and degranulation. [provided by RefSeq]
Molecular Mass	49.61 kDa
AA Sequence	MAYPGYGGGFGNFSIQVPGMQMGQPVPETGPAILLDGYSGPAYSDTYSSAGDSVY TYFSAVAGQDGEVDAEELQRCLTQSGINGTYSPPFSLETGRIMIAMLDRDHTGKMGF NAFKELWAALNAWKENFMTVDQDGSQTVEHHELRLQAIGLMGYRLSPQTLTTIVKRY SKNGRIFDDYVACCVKLRALTDFFRKRDLQQGSANFIYDDFLQGTMAI
Applications	Enzyme-linked Immunoabsorbent Assay Western Blot (Recombinant protein)

 Tel: 1-631-559-9269 1-516-512-3133

 Email: info@creative-biomart.com  Fax: 1-631-938-8127

 45-1 Ramsey Road, Shirley, NY 11967, USA

	Antibody Production Protein Array
Notes	Best use within three months from the date of receipt of this protein.
Storage	Store at -80 centigrade. Aliquot to avoid repeated freezing and thawing.
Storage Buffer	50 mM Tris-HCl, 10 mM reduced Glutathione, pH=8.0 in the elution buffer.

GENE INFORMATION

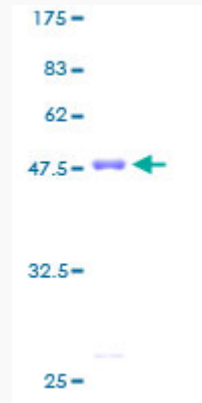
Gene Name	GCA grancalcin, EF-hand calcium binding protein [Homo sapiens]
Official Symbol	GCA
Synonyms	GCA; grancalcin, EF-hand calcium binding protein; grancalcin, EF hand calcium binding protein; grancalcin; GCL; grancalcin, penta-EF-hand protein; grancalcin, EF-hand calcium-binding protein;
Gene ID	25801
mRNA Refseq	NM_012198
Protein Refseq	NP_036330
MIM	607030
UniProt ID	P28676

 Tel: 1-631-559-9269 1-516-512-3133

 Email: info@creative-biomart.com  Fax: 1-631-938-8127

 45-1 Ramsey Road, Shirley, NY 11967, USA

**Quality Control
Testing**



12.5% SDS-PAGE Stained with Coomassie Blue.

 Tel: 1-631-559-9269 1-516-512-3133

 Email: info@creative-biomart.com  Fax: 1-631-938-8127

 45-1 Ramsey Road, Shirley, NY 11967, USA