

Recombinant Human GCA Protein, Myc/DDK-tagged, C13 and N15-labeled

Cat. No. GCA-4911H **Lot. No.** (See product label)

SPECIFICATION

Product Overview	GCA MS Standard C13 and N15-labeled recombinant protein (NP_036330) with a C-terminal MYC/DDK tag, was expressed in HEK293 cells.
Species	Human
Source	HEK293
Description	This gene encodes a calcium-binding protein that is abundant in neutrophils and macrophages. In the absence of divalent cation, this protein localizes to the cytosolic fraction; with magnesium alone, it partitions with the granule fraction; and in the presence of magnesium and calcium, it associates with both the granule and membrane fractions. Alternative splicing and use of alternative promoters results in multiple transcript variants.
Molecular Mass	24 kDa
AA Sequence	MAYPGYGGGFGNFSIQVPGMQMGQPVPETGPAILLDGYSGPAYSDTYSSAGDSVY TYFSAVAGQDGEVDAEELQRCLTQSGINGTYSPPFSLETGRIMIAMLRDHTGKMGF NAFKELWAALNAWKENFMTVDQDGSQTVEHHELQRQAIGLMGYRLSPQTLTTIVKRY SKNGRIFDDYVACCVKLRALTDFFRKRDLQQGSANFIYDDFLQGTMAITRTRPLE QKLISEEDLAANDILDYKDDDDKV
Purity	> 80% as determined by SDS-PAGE and Coomassie blue staining

 Tel: 1-631-559-9269 1-516-512-3133

 Email: info@creative-biomart.com  Fax: 1-631-938-8127

 45-1 Ramsey Road, Shirley, NY 11967, USA

Stability	Stable for 3 months from receipt of products under proper storage and handling conditions.
Storage	Store at -80 centigrade. Avoid repeated freeze-thaw cycles.
Concentration	50 µg/mL as determined by BCA
Storage Buffer	100 mM glycine, 25 mM Tris-HCl, pH 7.3.

GENE INFORMATION

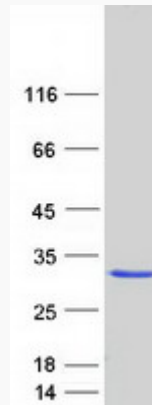
Gene Name	GCA grancalcin [Homo sapiens (human)]
Official Symbol	GCA
Synonyms	GCA; grancalcin, EF-hand calcium binding protein; grancalcin, EF hand calcium binding protein; grancalcin; GCL; grancalcin, penta-EF-hand protein; grancalcin, EF-hand calcium-binding protein;
Gene ID	25801
mRNA Refseq	NM_012198
Protein Refseq	NP_036330
MIM	607030
UniProt ID	P28676

 Tel: 1-631-559-9269 1-516-512-3133

 Email: info@creative-biomart.com  Fax: 1-631-938-8127

 45-1 Ramsey Road, Shirley, NY 11967, USA

SDS-PAGE



 Tel: 1-631-559-9269 1-516-512-3133

 Email: info@creative-biomart.com  Fax: 1-631-938-8127

 45-1 Ramsey Road, Shirley, NY 11967, USA