

Recombinant Human GCC1 Protein (4-775 aa), His-SUMO-tagged

Cat. No. GCC1-1089H Lot. No. (See product label)

SPECIFICATION

Product Overview Recombinant Human GCC1 Protein (4-775 aa) is produced by E. coli expression system. This protein is fused with a 6xHis-SUMO tag at the N-terminal. Research Area: Signal Transduction. Protein Description: Partial.

Species Human

Source E.coli

ProteinLength 4-775 aa

Description Probably involved in maintaining Golgi structure.

Form Tris-based buffer, 50% glycerol

Molecular Mass 103.4 kDa

AA Sequence

```
FGMNFGGGSPKDLLETIETQKKQLLQYQARLKDVVVRAYKSLLKEKEALEASIKVLSV
SHEADVGLAGVQLPGLTFPDSVDDRCSTHSEDSTGTATSLDTAASLTSTKGEFGVE
DDRPARGPPPPKSEEASWSESGVSSSSGDGPFAGGEVDKRLHQLKTQLATLTSSL
ATVTQEKS RMEASYLADKKMKQDLEDASNKAE EERARLE GELKGLQE QIAETKAR
LITQQH DRAQE QSDHALMLRELQKLLQEERTQRQDLELRLEETREALAGRAYAAEQ
MEGFELQTKQLTREVEELKSELQAIRDEKNQPD PRLQELQEEAARLKSHFQAQLQQ
EMRKTALAE DQLRQQSQVEEQRVAALENQISEVSELLGTYEKAKQKQDQLAIQKLER
ILQLDLENKTLALAASSRSPLD SHGEESSLDVNV LKDKMEKLRLLQVAARKSQVTL
```

 Tel: 1-631-559-9269 1-516-512-3133

 Email: info@creative-biomart.com  Fax: 1-631-938-8127

 45-1 Ramsey Road, Shirley, NY 11967, USA

DVEKLCDLEIMPSSEAADGEKATALYYQQELKQLKEEFERYKMRAQVVLKSKNTKD
 GNLGKELEAAQEQLAELKEKYISLRLSCEELEHQHQEADDWKQELARLQQLHRQE
 LERCQLDFRDRTLKLEELHKQRDRALAVLTEKDLELEQLRSVALASGLPGRRSPVG
 GGGPGDPADTSSSDSLTQALQLAAANEPTFFLYAEQLARKEVEITSLRKQKHRLEVE
 VHQLQDRLLEEGERHREEVAALQSHIEKNIRDQSREGANLEYLKNIIYRFLTLPDSL
 RQQTTLTALTILHFSPEEKQVIMRLPTSASWWPSGKR

Purity	> 90% as determined by SDS-PAGE.
Notes	Repeated freezing and thawing is not recommended. Store working aliquots at 4 centigrade for up to one week.
Storage	The shelf life is related to many factors, storage state, buffer ingredients, storage temperature and the stability of the protein itself. Generally, the shelf life of liquid form is 6 months at -20 centigrade/-80 centigrade. The shelf life of lyophilized form is 12 months at -20 centigrade/-80 centigrade.
Concentration	A hardcopy of COA with concentration instruction is sent along with the products.

GENE INFORMATION

Gene Name	GCC1 GRIP and coiled-coil domain containing 1 [Homo sapiens]
Official Symbol	GCC1
Synonyms	GCC1; FLJ22035; GCC1P; GCC88; MGC20706;
Gene ID	79571
mRNA Refseq	NM_024523

 Tel: 1-631-559-9269 1-516-512-3133

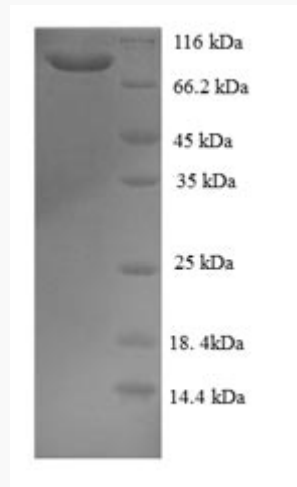
 Email: info@creative-biomart.com  Fax: 1-631-938-8127

 45-1 Ramsey Road, Shirley, NY 11967, USA

Protein Refseq NP_078799

MIM 607418

UniProt ID Q96CN9



(Tris-Glycine gel) Discontinuous SDS-PAGE (reduced) with 5% enrichment gel and 15% separation gel.

 Tel: 1-631-559-9269 1-516-512-3133

 Email: info@creative-biomart.com  Fax: 1-631-938-8127

 45-1 Ramsey Road, Shirley, NY 11967, USA