

Recombinant Human GCC1 Protein, GST-tagged

Cat. No. GCC1-4789H Lot. No. (See product label)

SPECIFICATION

Product Overview	Human GCC1 full-length ORF (NP_078799.2, 1 a.a. - 775 a.a.) recombinant protein with GST-tag at N-terminal.
Species	Human
Source	Wheat Germ
Description	The protein encoded by this gene is a peripheral membrane protein. It is sensitive to brefeldin A. This encoded protein contains a GRIP domain which is thought to be used in targeting. It may play a role in the organization of trans-Golgi network subcompartment involved with membrane transport. [provided by RefSeq]
Molecular Mass	114.2 kDa
AA Sequence	MEKFGMNFGGGPSKDLLETIETQKKQLLQYQARLKDVVRAYKSLLKEKEALEASIK VLSVSHEADVGLAGVQLPGLTFPDSVDDRCSTHSEDSTGTATSLDTAASLTSTKGEF GVEDDRPARGPPPPKSEEASWSESGVSSSSGDGPFAGGEVDKRLHQLKTQLATLT SSLATVTQEKSMEASYLADKKKMKQDLEDASNKAEERARLEGELKGLQEQAET KARLITQQHDRAQEQSDHALMLRELQKLLQEERTQRQDLELRLEETREALAGRAYA AEQMEGFELQTKQLTREVEELKSELQAIRDEKNQDPRLQELQEEAARLKSHFQAQ LQQEMRKTALAEDQLRQQSQVEEQRVAALENQISEVSELLGTYEKAKQKDQLAIQK LKERILQLDLENKTLALAASSRSPLD SHGEESSLDVNVLKDKMEKLRLLQVAARKS QVTL DVEKLC DLEIMP SSEAADGEKATALYYQQLKQLKEEFERYKMRAQVVLKSK NTKDG NLGKELEAAQEQLAELKEKYISLRLSCEELEHQHQEADDWKQELARLQQL

 Tel: 1-631-559-9269 1-516-512-3133

 Email: info@creative-biomart.com  Fax: 1-631-938-8127

 45-1 Ramsey Road, Shirley, NY 11967, USA

HRQELERCQLDFRDRTLKLEELHKQRDRALAVLTEKDLELEQLRSVALASGLPGR
 RSPVGGGGPGDPADTSSSDSLTQALQLAAANEPTFFLYAEQLARKEVEITSLRKQK
 HRLEVEVHQLQDRLLLEGERHREEVAALQSHIEKNIRDQSREGANLEYLKNIIYRFLT
 LPDSLGRQQTLTAILTILHFSPEEKQVIMRLPTSASWWPSGKR

Applications	Enzyme-linked Immunoabsorbent Assay Western Blot (Recombinant protein) Antibody Production Protein Array
Notes	Best use within three months from the date of receipt of this protein.
Storage	Store at -80 centigrade. Aliquot to avoid repeated freezing and thawing.
Storage Buffer	50 mM Tris-HCl, 10 mM reduced Glutathione, pH=8.0 in the elution buffer.

GENE INFORMATION

Gene Name	GCC1 GRIP and coiled-coil domain containing 1 [Homo sapiens]
Official Symbol	GCC1
Synonyms	GCC1; GRIP and coiled-coil domain containing 1; golgi coiled coil 1; GRIP and coiled-coil domain-containing protein 1; FLJ22035; GCC1P; GCC88; MGC20706; golgi coiled-coil 1; golgi coiled-coil protein 1; peripheral membrane Golgi protein;
Gene ID	79571
mRNA Refseq	NM_024523
Protein Refseq	NP_078799

 Tel: 1-631-559-9269 1-516-512-3133

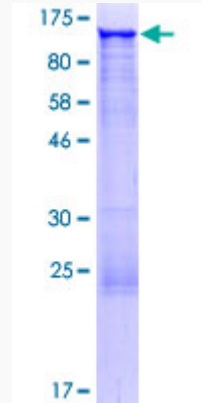
 Email: info@creative-biomart.com  Fax: 1-631-938-8127

 45-1 Ramsey Road, Shirley, NY 11967, USA

MIM 607418

UniProt ID Q96CN9

Quality Control
Testing



12.5% SDS-PAGE Stained with Coomassie Blue.

 Tel: 1-631-559-9269 1-516-512-3133

 Email: info@creative-biomart.com  Fax: 1-631-938-8127

 45-1 Ramsey Road, Shirley, NY 11967, USA