

Recombinant Human GCDH Protein (Arg45-Lys438), N-His tagged

Cat. No. GCDH-2333H Lot. No. (See product label)

SPECIFICATION

Product Overview	Recombinant human GCDH (Arg45-Lys438) protein fused with the N-terminal His tag was expressed in E. coli.
Species	Human
Source	E.coli
ProteinLength	Arg45-Lys438
Molecular Mass	43.34 kDa
Purity	>90 % as determined by SDS-PAGE.
Notes	For research use only.
Storage	Use a manual defrost freezer and avoid repeated freeze thaw cycles. Store at 2 to 8 centigrade for one week. Store at -20 to -80 centigrade for twelve months from the date of receipt.
Storage Buffer	Supplied as solution form in PBS or lyophilized from PBS.
Reconstitution	Reconstitute in sterile water for a stock solution.
Shipping	In general, proteins are provided as lyophilized powder/frozen liquid. They are

 Tel: 1-631-559-9269 1-516-512-3133

 Email: info@creative-biomart.com  Fax: 1-631-938-8127

 45-1 Ramsey Road, Shirley, NY 11967, USA

shipped out with dry ice/blue ice unless customers require otherwise.

GENE INFORMATION

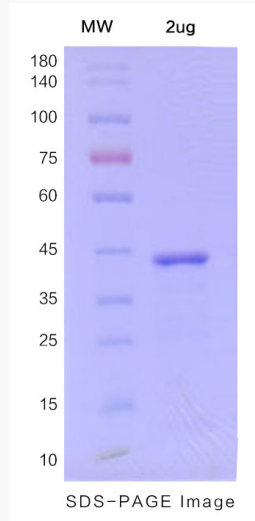
Gene Name	GCDH glutaryl-CoA dehydrogenase [Homo sapiens (human)]
Official Symbol	GCDH
Synonyms	GCDH; glutaryl-CoA dehydrogenase; glutaryl Coenzyme A dehydrogenase; glutaryl-CoA dehydrogenase, mitochondrial; ACAD5; glutaryl-Coenzyme A dehydrogenase; GCD;
Gene ID	2639
mRNA Refseq	NM_000159
Protein Refseq	NP_000150
MIM	608801
UniProt ID	Q92947

 Tel: 1-631-559-9269 1-516-512-3133

 Email: info@creative-biomart.com  Fax: 1-631-938-8127

 45-1 Ramsey Road, Shirley, NY 11967, USA

SDS-PAGE



 Tel: 1-631-559-9269 1-516-512-3133

 Email: info@creative-biomart.com  Fax: 1-631-938-8127

 45-1 Ramsey Road, Shirley, NY 11967, USA