

Recombinant Human GCDH Protein (Thr31-Pro204)

Cat. No. GCDH-2334H Lot. No. (See product label)

SPECIFICATION

| | |
|-------------------------|---|
| Product Overview | Recombinant human GCDH (Thr31-Pro204) protein fused with out tag was expressed in E. coli. |
| Species | Human |
| Source | E.coli |
| ProteinLength | Thr31-Pro204 |
| Molecular Mass | 19.14 kDa |
| Purity | >90 % as determined by SDS-PAGE. |
| Notes | For research use only. |
| Storage | Use a manual defrost freezer and avoid repeated freeze thaw cycles. Store at 2 to 8 centigrade for one week. Store at -20 to -80 centigrade for twelve months from the date of receipt. |
| Storage Buffer | Supplied as solution form in PBS or lyophilized from PBS. |
| Reconstitution | Reconstitute in sterile water for a stock solution. |
| Shipping | In general, proteins are provided as lyophilized powder/frozen liquid. They are shipped out with dry ice/blue ice unless customers require otherwise. |

 Tel: 1-631-559-9269 1-516-512-3133

 Email: info@creative-biomart.com  Fax: 1-631-938-8127

 45-1 Ramsey Road, Shirley, NY 11967, USA

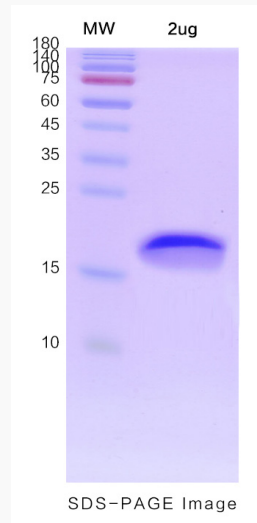
GENE INFORMATION

| | |
|------------------------|--|
| Gene Name | GCDH glutaryl-CoA dehydrogenase [Homo sapiens (human)] |
| Official Symbol | GCDH |
| Synonyms | GCDH; glutaryl-CoA dehydrogenase; glutaryl Coenzyme A dehydrogenase; glutaryl-CoA dehydrogenase, mitochondrial; ACAD5; glutaryl-Coenzyme A dehydrogenase; GCD; |
| Gene ID | 2639 |
| mRNA Refseq | NM_000159 |
| Protein Refseq | NP_000150 |
| MIM | 608801 |
| UniProt ID | Q92947 |

 Tel: 1-631-559-9269 1-516-512-3133 Email: info@creative-biomart.com  Fax: 1-631-938-8127 45-1 Ramsey Road, Shirley, NY 11967, USA



SDS-PAGE



Tel: 1-631-559-9269 1-516-512-3133

Email: info@creative-biomart.com Fax: 1-631-938-8127

45-1 Ramsey Road, Shirley, NY 11967, USA