

Recombinant Human GCDH Protein, GST-tagged

Cat. No. GCDH-4790H Lot. No. (See product label)

SPECIFICATION

Product Overview Human GCDH full-length ORF (NP_000150.1, 1 a.a. - 438 a.a.) recombinant protein with GST-tag at N-terminal.

Species Human

Source Wheat Germ

Description The protein encoded by this gene belongs to the acyl-CoA dehydrogenase family. It catalyzes the oxidative decarboxylation of glutaryl-CoA to crotonyl-CoA and CO(2) in the degradative pathway of L-lysine, L-hydroxylysine, and L-tryptophan metabolism. It uses electron transfer flavoprotein as its electron acceptor. The enzyme exists in the mitochondrial matrix as a homotetramer of 45-kD subunits. Alternatively spliced transcript variants encoding different isoforms have been identified. [provided by RefSeq]

Molecular Mass 74.5 kDa

AA Sequence

```
MALRGVSVRLLSRGPGLHVLRTWVSSAAQTEKGGRTQSQLAKSSRPEFDWQDPLV
LEEQLTTDEILIRDTRTYCQERLMPRILLANRNEVFHREIISEMGELGVLGPTIKGYG
CAGVSSVAYGLLARELERVDSGYRSAMSVQSSLMHPIYAYGSEEQRQKYLPLQAK
GELLGCFGLTEPNSGSDPSSMETRAHYNSSNKSXYTLNGTKTWITNSPMADLFVVA
RCEDGCIRGFLLEKGMRGLSAPRIQGKFSLRASATGMIIMDGVEVPEENVLPGASSL
GGPFGCLNNARYGIAWVGLGASEFCLHTARQYALDRMQFGVPLARNQLIQKKLAD
MLTEITLGLHACLQLGRLKDQDKAAPPEMVSLLKRNNCGKALDIARQARDMLGGNGIS
```

 Tel: 1-631-559-9269 1-516-512-3133

 Email: info@creative-biomart.com  Fax: 1-631-938-8127

 45-1 Ramsey Road, Shirley, NY 11967, USA

DEYHVIRHAMNLEAVNTYEGTHDIHALILGRAITGIQAFTASK

Applications

Enzyme-linked Immunoabsorbent Assay
 Western Blot (Recombinant protein)
 Antibody Production
 Protein Array

Notes

Best use within three months from the date of receipt of this protein.

Storage

Store at -80 centigrade. Aliquot to avoid repeated freezing and thawing.

Storage Buffer

50 mM Tris-HCl, 10 mM reduced Glutathione, pH=8.0 in the elution buffer.

GENE INFORMATION

Gene Name

GCDH glutaryl-CoA dehydrogenase [Homo sapiens]

Official Symbol

GCDH

Synonyms

GCDH; glutaryl-CoA dehydrogenase; glutaryl Coenzyme A dehydrogenase; glutaryl-CoA dehydrogenase, mitochondrial; ACAD5; glutaryl-Coenzyme A dehydrogenase; GCD;

Gene ID

2639

mRNA Refseq

NM_000159

Protein Refseq

NP_000150

MIM

608801

 Tel: 1-631-559-9269 1-516-512-3133

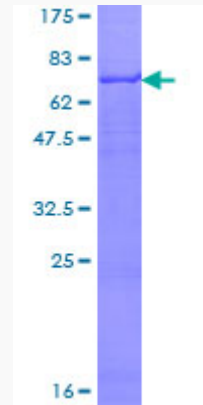
 Email: info@creative-biomart.com  Fax: 1-631-938-8127

 45-1 Ramsey Road, Shirley, NY 11967, USA

UniProt ID

Q92947

Quality Control
Testing



12.5% SDS-PAGE Stained with Coomassie Blue.

 Tel: 1-631-559-9269 1-516-512-3133

 Email: info@creative-biomart.com  Fax: 1-631-938-8127

 45-1 Ramsey Road, Shirley, NY 11967, USA