

Recombinant Human GCDH Protein, Myc/DDK-tagged, C13 and N15-labeled

Cat. No. GCDH-6691H **Lot. No.** (See product label)

SPECIFICATION

Product Overview	GCDH MS Standard C13 and N15-labeled recombinant protein (NP_000150) with a C-terminal MYC/DDK tag, was expressed in HEK293 cells.
Species	Human
Source	HEK293
Description	The protein encoded by this gene belongs to the acyl-CoA dehydrogenase family. It catalyzes the oxidative decarboxylation of glutaryl-CoA to crotonyl-CoA and CO(2) in the degradative pathway of L-lysine, L-hydroxylysine, and L-tryptophan metabolism. It uses electron transfer flavoprotein as its electron acceptor. The enzyme exists in the mitochondrial matrix as a homotetramer of 45-kD subunits. Mutations in this gene result in the metabolic disorder glutaric aciduria type 1, which is also known as glutaric acidemia type I. Alternative splicing of this gene results in multiple transcript variants. A related pseudogene has been identified on chromosome 12.
Molecular Mass	48.1 kDa
AA Sequence	MALRGVSVRLLSRGPGLHVLRTWVSSAAQTEKGGRTQSQLAKSSRPEFDWQDPLV LEEQLTTDEILIRDTRTYCQERLMPRILLANRNEVFHREIISEMGELGVLGPTIKGYG CAGVSSVAYGLLARELERVDSGYRSAMSVQSSLVMHPIYAYGSEEQRQKYLPLAK GELLGCFGLTEPNSGSDPSSMETRAHYNSSNKSYYTLNGTKTWITNSPMADLFVVWA RCEDGCIRGFLLEKGMRGLSAPRIQKFSLRASATGMIIMDGVEVPEENVLPGASSL

 Tel: 1-631-559-9269 1-516-512-3133

 Email: info@creative-biomart.com  Fax: 1-631-938-8127

 45-1 Ramsey Road, Shirley, NY 11967, USA

GGPFGCLNNARYGIAWGVLGASEFCLHTARQYALDRMQFGVPLARNQLIQKKLAD
 MLTEITLGLHACLQLGRLKDQDKAAPPEMVSLLKRNNCGKALDIARQARDMLGGNGIS
 DEYHVIRHAMNLEAVNTYEGTHDIHALILGRAITGIQAFTASKTRTRPLEQKLISEEDL
 AANDILDYKDDDDKV

Purity > 80% as determined by SDS-PAGE and Coomassie blue staining

Stability Stable for 3 months from receipt of products under proper storage and handling conditions.

Storage Store at -80 centigrade. Avoid repeated freeze-thaw cycles.

Concentration 50 µg/mL as determined by BCA

Storage Buffer 100 mM glycine, 25 mM Tris-HCl, pH 7.3.

GENE INFORMATION

Gene Name GCDH glutaryl-CoA dehydrogenase [Homo sapiens (human)]

Official Symbol GCDH

Synonyms GCDH; glutaryl-CoA dehydrogenase; glutaryl Coenzyme A dehydrogenase; glutaryl-CoA dehydrogenase, mitochondrial; ACAD5; glutaryl-Coenzyme A dehydrogenase; GCD;

Gene ID 2639

mRNA Refseq NM_000159

Protein Refseq NP_000150

 Tel: 1-631-559-9269 1-516-512-3133

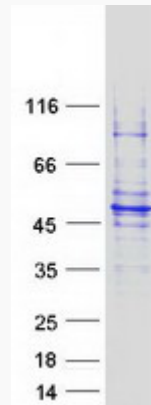
 Email: info@creative-biomart.com  Fax: 1-631-938-8127

 45-1 Ramsey Road, Shirley, NY 11967, USA

MIM 608801

UniProt ID Q92947

SDS-PAGE



 Tel: 1-631-559-9269 1-516-512-3133

 Email: info@creative-biomart.com  Fax: 1-631-938-8127

 45-1 Ramsey Road, Shirley, NY 11967, USA