

Recombinant Human GCET2 Protein, GST-tagged

Cat. No. GCET2-4791H Lot. No. (See product label)

SPECIFICATION

Product Overview	Human GCET2 full-length ORF (AAH30506, 1 a.a. - 178 a.a.) recombinant protein with GST-tag at N-terminal.
Species	Human
Source	Wheat Germ
Description	This gene encodes a protein which may function in signal transduction pathways and whose expression is elevated in germinal cell lymphomas. It contains a putative PDZ-interacting domain, an immunoreceptor tyrosine-based activation motif (ITAM), and two putative SH2 binding sites. In B cells, its expression is specifically induced by interleukin-4. Alternative splicing results in multiple transcript variants encoding different isoforms. [provided by RefSeq]
Molecular Mass	45.32 kDa
AA Sequence	MGNSLLRENRRQQNTQEMPWNVRMQSPKQRTSRCWDHIIAEGCFCLPWKKILIFE KRQDSQNERMSSTPIQDNVDQTYSEELCYTLINHRVLCRPSGNSAEEYYENVP CKAERPRESLGGTETEYSLHMPSTDPRHARSPEDYEYLLMPHRISSHFLQQPRPL MAPSETQFSHL
Applications	Enzyme-linked Immunoabsorbent Assay Western Blot (Recombinant protein) Antibody Production Protein Array

 Tel: 1-631-559-9269 1-516-512-3133

 Email: info@creative-biomart.com  Fax: 1-631-938-8127

 45-1 Ramsey Road, Shirley, NY 11967, USA

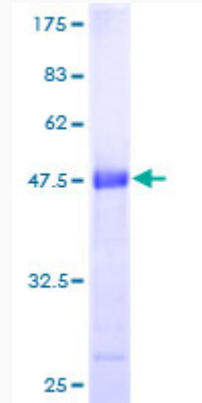
Notes	Best use within three months from the date of receipt of this protein.
Storage	Store at -80 centigrade. Aliquot to avoid repeated freezing and thawing.
Storage Buffer	50 mM Tris-HCl, 10 mM reduced Glutathione, pH=8.0 in the elution buffer.
GENE INFORMATION	
Gene Name	GCET2 germinal center expressed transcript 2 [Homo sapiens]
Official Symbol	GCET2
Synonyms	GCET2; germinal center expressed transcript 2; germinal center B-cell-expressed transcript 2 protein; HGAL; human germinal center associated lymphoma; MGC40441; human germinal center-associated lymphoma; germinal center-associated lymphoma protein; GCAT2;
Gene ID	257144
mRNA Refseq	NM_001190259
Protein Refseq	NP_001177188
MIM	607792
UniProt ID	Q8N6F7

 Tel: 1-631-559-9269 1-516-512-3133

 Email: info@creative-biomart.com  Fax: 1-631-938-8127

 45-1 Ramsey Road, Shirley, NY 11967, USA

**Quality Control
Testing**



12.5% SDS-PAGE Stained with Coomassie Blue.

 Tel: 1-631-559-9269 1-516-512-3133

 Email: info@creative-biomart.com  Fax: 1-631-938-8127

 45-1 Ramsey Road, Shirley, NY 11967, USA