

Recombinant Human GCFC2 Protein, Myc/DDK-tagged, C13 and N15-labeled

Cat. No. GCFC2-1208H Lot. No. (See product label)

SPECIFICATION

Product Overview

C2orf3 MS Standard C13 and N15-labeled recombinant protein (NP_003194) with a C-terminal MYC/DDK tag, was expressed in HEK293 cells.

Species

Human

Source

HEK293

Description

The first mRNA transcript isolated for this gene was part of an artificial chimera derived from two distinct gene transcripts and a primer used in the cloning process (see Genbank accession M29204). A positively charged amino terminus present only in the chimera was determined to bind GC-rich DNA, thus mistakenly thought to identify a transcription factor gene.

Molecular Mass

89.4 kDa

AA Sequence

MAHRPKRTRFRQRAADSSSDSGAEESPAEPGAARELPVPGSAEEEEPPSGGGRAQV
 AGLPHRVRGPRGRGRVWASSRRATKAAPRADEGSESRTLVDVSTDEEDKIHHSSES
 KDDQGLSSDSSSSLGEKELSSTVKIPDAAFIQAARRKRELARAQDDYISLDVQHTSSI
 SGMKRESEDDPESEPDDHEKRIPFTLRPQTLRQRMAEESISRNEETSEESQEDEKQ
 DTWEQQQMRKAVKIIERDIDLSCGNGSSKVKKFDTSISFPPVNLEIIKKQLNTRLTL
 QETHRSHLREYEKYVQDVKSSKSTIQNLESSSNQALNCKFYKSMKIYVENLIDCLNE
 KIINIQEIESSMHALLLKQAMTFMKRRQDELKHESTYLQQLSRKDETSTSGNFSVDEK
 TQWILEEIESRRTKRRQARVLSGNCNHQEGTSSDDELPSAEMIDFQKSQGDILQKQ

Tel: 1-631-559-9269 1-516-512-3133

Email: info@creative-biomart.com Fax: 1-631-938-8127

45-1 Ramsey Road, Shirley, NY 11967, USA

KKVFEEVQDDFCNIQNILLKFQQWREKFPDSYYEAFISLCIPKLLNPLIRVQLIDWNPL
 KLESTGLKEMPWFKSVEEFMDSSVEDSKKESSSDKKVLSAIINKTIIPRLTDFVEFLW
 DPLSTSQTTSLITHCRVILEEHSTCENEVSKSRQDLLKSIVSRMKKAVEDDVFIPLYPK
 SAVENKTSPHSKFQERQFWSGLKLFNRILLWNGLLTDDTLQELGLGKLLNRYLIALL
 NATPGPDVVKKCNQVAACLPEKWFENSAMRTSIPQLENFIQFLLQSAHKLSRSEFRD
 EVEEIIILLVKIKALNQAESFIGEHLDHLKSLIKEDTRTRPLEQKLISEEDLAANDILDYK
 DDDDKV

Purity > 80% as determined by SDS-PAGE and Coomassie blue staining

Stability Stable for 3 months from receipt of products under proper storage and handling conditions.

Storage Store at -80 centigrade. Avoid repeated freeze-thaw cycles.

Concentration 50 µg/mL as determined by BCA

Storage Buffer 100 mM glycine, 25 mM Tris-HCl, pH 7.3.

GENE INFORMATION

Gene Name GCFC2 GC-rich sequence DNA-binding factor 2 [Homo sapiens (human)]

Official Symbol GCFC2

Synonyms GCFC2; GC-rich sequence DNA-binding factor 2; GCF; TCF9; DNABF; C2orf3; intron Large complex component GCFC2; GC-rich sequence DNA-binding factor 2; GC binding factor; GC bindng factor; TCF-9; transcription factor 9 (binds GC-rich sequences)

Gene ID 6936

 Tel: 1-631-559-9269 1-516-512-3133

 Email: info@creative-biomart.com  Fax: 1-631-938-8127

 45-1 Ramsey Road, Shirley, NY 11967, USA

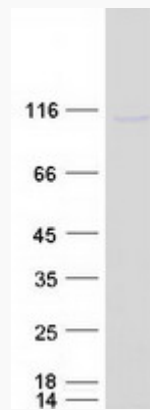
mRNA Refseq [NM_003203](#)

Protein Refseq [NP_003194](#)

MIM [189901](#)

UniProt ID [P16383](#)

SDS-PAGE



 Tel: 1-631-559-9269 1-516-512-3133

 Email: info@creative-biomart.com  Fax: 1-631-938-8127

 45-1 Ramsey Road, Shirley, NY 11967, USA