

Recombinant Human GCG Protein, Myc/DDK-tagged, C13 and N15-labeled

Cat. No. GCG-1451H **Lot. No.** (See product label)

SPECIFICATION

| | |
|-------------------------|---|
| Product Overview | GCG MS Standard C13 and N15-labeled recombinant protein (NP_002045) with a C-terminal MYC/DDK tag, was expressed in HEK293 cells. |
| Species | Human |
| Source | HEK293 |
| Description | The protein encoded by this gene is actually a preproprotein that is cleaved into four distinct mature peptides. One of these, glucagon, is a pancreatic hormone that counteracts the glucose-lowering action of insulin by stimulating glycogenolysis and gluconeogenesis. Glucagon is a ligand for a specific G-protein linked receptor whose signalling pathway controls cell proliferation. Two of the other peptides are secreted from gut endocrine cells and promote nutrient absorption through distinct mechanisms. Finally, the fourth peptide is similar to glicentin, an active enteroglucagon. |
| Molecular Mass | 20.9 kDa |
| AA Sequence | MKSIYFVAGLFVMLVQGSWQRSLQDTEEKSRFSASQADPLSDPDQMNE DKRHSQ GTFTSDYSKYLDSRRAQDFVQWLMNTRNRNNI AKRHDEFERHAEGTFTSDVSSYL EGQAAKEFI AWLVKGRGRDRDFPEEVAIVEELGRRHADGFSFSDMNTILDNLAARDFI NWL IQTKITDRKTRTRPLEQKLISEEDLAANDILDYKDDDDKV |
| Purity | > 80% as determined by SDS-PAGE and Coomassie blue staining |

 Tel: 1-631-559-9269 1-516-512-3133

 Email: info@creative-biomart.com  Fax: 1-631-938-8127

 45-1 Ramsey Road, Shirley, NY 11967, USA



| | |
|-----------------------|--|
| Stability | Stable for 3 months from receipt of products under proper storage and handling conditions. |
| Storage | Store at -80 centigrade. Avoid repeated freeze-thaw cycles. |
| Concentration | 50 µg/mL as determined by BCA |
| Storage Buffer | 100 mM glycine, 25 mM Tris-HCl, pH 7.3. |

GENE INFORMATION

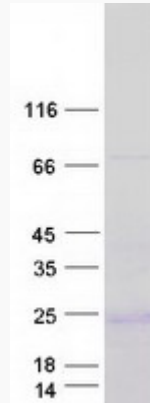
| | |
|------------------------|--|
| Gene Name | GCG glucagon [Homo sapiens (human)] |
| Official Symbol | GCG |
| Synonyms | GCG; glucagon; glicentin related polypeptide; GLP1; GLP2; glucagon like peptide 1; glucagon like peptide 2; GRPP; glucagon-like peptide 1; glucagon-like peptide 2; glicentin-related polypeptide; |
| Gene ID | 2641 |
| mRNA Refseq | NM_002054 |
| Protein Refseq | NP_002045 |
| MIM | 138030 |
| UniProt ID | P01275 |

Tel: 1-631-559-9269 1-516-512-3133

Email: info@creative-biomart.com Fax: 1-631-938-8127

45-1 Ramsey Road, Shirley, NY 11967, USA

SDS-PAGE



 Tel: 1-631-559-9269 1-516-512-3133

 Email: info@creative-biomart.com  Fax: 1-631-938-8127

 45-1 Ramsey Road, Shirley, NY 11967, USA