

## Recombinant Human GCG Protein, His-tagged

**Cat. No.** GCG-2196H    **Lot. No.** (See product label)

### SPECIFICATION

<b>Product Overview</b>	Recombinant Human GCG Protein (His146-Asp178*2) with a N-His tag was expressed in E. coli.
<b>Species</b>	Human
<b>Source</b>	E.coli
<b>ProteinLength</b>	His146-Asp178*2
<b>Description</b>	The protein encoded by this gene is actually a preproprotein that is cleaved into four distinct mature peptides. One of these, glucagon, is a pancreatic hormone that counteracts the glucose-lowering action of insulin by stimulating glycogenolysis and gluconeogenesis. Glucagon is a ligand for a specific G-protein linked receptor whose signalling pathway controls cell proliferation. Two of the other peptides are secreted from gut endocrine cells and promote nutrient absorption through distinct mechanisms. Finally, the fourth peptide is similar to glicentin, an active enteroglucagon.
<b>Form</b>	Freeze-dried powder
<b>Molecular Mass</b>	Predicted Molecular Mass: 11.2 kDa Accurate Molecular Mass: 11 kDa
<b>Endotoxin</b>	<1.0 EU per 1g (determined by the LAL method).

 Tel: 1-631-559-9269    1-516-512-3133

 Email: [info@creative-biomart.com](mailto:info@creative-biomart.com)     Fax: 1-631-938-8127

 45-1 Ramsey Road, Shirley, NY 11967, USA

<b>Purity</b>	> 95%
<b>Applications</b>	Positive Control; Immunogen; SDS-PAGE; WB.
<b>Stability</b>	The thermal stability is described by the loss rate. The loss rate was determined by accelerated thermal degradation test, that is, incubate the protein at 37 centigrade for 48h, and no obvious degradation and precipitation were observed. The loss rate is less than 5% within the expiration date under appropriate storage condition.
<b>Storage</b>	Avoid repeated freeze/thaw cycles. Store at 2-8 centigrade for one month. Aliquot and store at -80 centigrade for 12 months.
<b>Storage Buffer</b>	PBS, pH7.4, containing 0.01% SKL, 1mM DTT, 5% Trehalose and Proclin300.
<b>Reconstitution</b>	Reconstitute in ddH <sub>2</sub> O to a concentration of 0.1-0.5 mg/mL. Do not vortex.

## GENE INFORMATION

<b>Gene Name</b>	GCG glucagon [ Homo sapiens (human) ]
<b>Official Symbol</b>	GCG
<b>Synonyms</b>	GCG; glucagon; glicentin related polypeptide; GLP1; GLP2; glucagon like peptide 1; glucagon like peptide 2; GRPP; glucagon-like peptide 1; glucagon-like peptide 2; glicentin-related polypeptide;
<b>Gene ID</b>	2641
<b>mRNA Refseq</b>	NM_002054
<b>Protein Refseq</b>	NP_002045

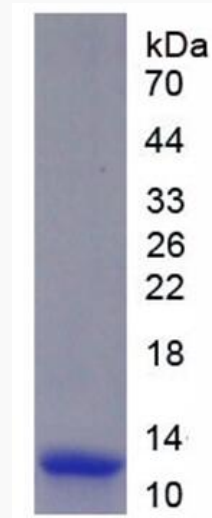
 Tel: 1-631-559-9269 1-516-512-3133

 Email: [info@creative-biomart.com](mailto:info@creative-biomart.com)  Fax: 1-631-938-8127

 45-1 Ramsey Road, Shirley, NY 11967, USA

**MIM** 138030

**UniProt ID** P01275



 Tel: 1-631-559-9269 1-516-512-3133

 Email: [info@creative-biomart.com](mailto:info@creative-biomart.com)  Fax: 1-631-938-8127

 45-1 Ramsey Road, Shirley, NY 11967, USA