

Recombinant Human GCGR Full Length Transmembrane protein, His-tagged

Cat. No. GCGR-1319H Lot. No. (See product label)

SPECIFICATION

Product Overview	Recombinant Human GCGR protein(P47871)(26-477aa), fused to N-terminal His tag, was expressed in E. coli.
Species	Human
Source	E.coli
ProteinLength	26-477aa
Form	<p>If the delivery form is liquid, the default storage buffer is Tris/PBS-based buffer, 5%-50% glycerol.</p> <p>If the delivery form is lyophilized powder, the buffer before lyophilization is Tris/PBS-based buffer, 6% Trehalose, pH 8.0.</p>
Molecular Mass	54.1 kDa
AA Sequence	<p>AQVMDFLFEKWKLYGDQCHHNLSELLPPPTTELVCNRTFDKYSCWPDTPANTTANISC PWYL PWHHKVQHRFVFKRCGPDGQWVRGPRGQPWRDASQCQMDGEEIEVQKE VAKMYSSFQVMY TVGYSLSLGALLLAILGGLSKLHCTRNAIHANLFASFVLKASSV LVIDGLLRTRYSQL IGDDLSVSTWLSDGAVAGCRVAAVFMQYGIVANYCWLLVEGL YLHNLGLATLPERSFFS LYLIGIGWGAPMLFVVPWAVVKCLFENVQCWTSNDNMG FWWILRFPVFLAILINFFIFVRI VQLLVAKLRARQMHHTDYKFRLAKSTLTLIPLLGVHE VVFAFVTDEHAQGLRSACLFFD LFLSSFQGLLVAVLYCFLNKEVQSELRRRWHRW RLGKVLWEERNTSNHRASSSPGHGPPS KELQFGRGGGSQDSSAETPLAGGLPRL</p>

 Tel: 1-631-559-9269 1-516-512-3133

 Email: info@creative-biomart.com  Fax: 1-631-938-8127

 45-1 Ramsey Road, Shirley, NY 11967, USA

AESPF

Storage

Store at -20°C/-80°C upon receipt, aliquoting is necessary for mutiple use. Avoid repeated freeze-thaw cycles.

Reconstitution

Please reconstitute protein in deionized sterile water to a concentration of 0.1-1.0 mg/mL. We recommend to add 5-50% of glycerol (final concentration) and aliquot for long-term storage at -20°C/-80°C. Our default final concentration of glycerol is 50%.

GENE INFORMATION

Gene Name

GCGR glucagon receptor [Homo sapiens]

Official Symbol

GCGR

Synonyms

GCGR; glucagon receptor; GGR; GL-R; FLJ97182; MGC138246;

Gene ID

2642

mRNA Refseq

NM_000160

Protein Refseq

NP_000151

MIM

138033

UniProt ID

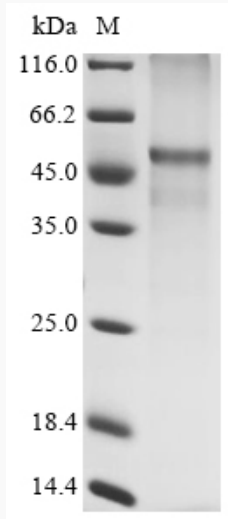
P47871

 Tel: 1-631-559-9269 1-516-512-3133

 Email: info@creative-biomart.com  Fax: 1-631-938-8127

 45-1 Ramsey Road, Shirley, NY 11967, USA

SDS-PAGE



 Tel: 1-631-559-9269 1-516-512-3133

 Email: info@creative-biomart.com  Fax: 1-631-938-8127

 45-1 Ramsey Road, Shirley, NY 11967, USA