

Recombinant Human GCLC Protein, GST-tagged

Cat. No. GCLC-4800H Lot. No. (See product label)

SPECIFICATION

Product Overview	Human GCLC full-length ORF (NP_001489.1, 1 a.a. - 637 a.a.) recombinant protein with GST-tag at N-terminal.
Species	Human
Source	Wheat Germ
Description	Glutamate-cysteine ligase, also known as gamma-glutamylcysteine synthetase is the first rate limiting enzyme of glutathione synthesis. The enzyme consists of two subunits, a heavy catalytic subunit and a light regulatory subunit. The gene encoding the catalytic subunit encodes a protein of 367 amino acids with a calculated molecular weight of 72.773 kDa and maps to chromosome 6. The regulatory subunit is derived from a different gene located on chromosome 1p22-p21. Deficiency of gamma-glutamylcysteine synthetase in human is associated with enzymopathic hemolytic anemia. [provided by RefSeq]
Molecular Mass	99.2 kDa
AA Sequence	MGLLSQGSPLSWEETKRHADHVRRHGILQFLHIYHAVKDRHKDVLKVGDEVEYMLV SFDHENKKVRLVLSGEKVLETLQEKGERTNPNHPTLWRPEYGSYMIETPGQPYG GTMSEFNTVEANMRKRKEATSILEENQALCTITSFPRLGCPGFTLPEVKPNPVEGG ASKSLFFPDEAINKHPRFSTLTRNIRHRRGEKVVINVPIFKDKNTPSPFIETFTEDDEA SRASKPDHIYMDAMGFGMGNCCLQVTFQACSEARYLYDQLATICPIVMALSAASP FYRGYVSDIDCRWGVISASVDDRTREERGLEPLKNNNYRISKSRYSIDSYSLSKCGE

 Tel: 1-631-559-9269 1-516-512-3133

 Email: info@creative-biomart.com  Fax: 1-631-938-8127

 45-1 Ramsey Road, Shirley, NY 11967, USA

KYNDIDLTIDKEIYEQLLQEGIDHLLAQHVAHLFIRDPLTLFEEKIHLDDANESDHFENI
 QSTNWQTMRFKPPPPNSDIGWRVEFRPMEVQLTDFENSAYVVFVLLTRVILSYKL
 DFLIPLSKVDENMKVAQKRDAVLQGMFYFRKDICKGGNAVVDGCGKAQNSTELAAE
 EYTLMSIDTIINGKEGVFPGLIPILNSYLENMEVDVDTRCSILNYLKLKIKKRASGELMTV
 ARWMREFIANHPDYKQDSVITDEMNYSLILKCNQIANELCEPELLGSAFRKVKYSG
 SKTDSSN

Applications	Enzyme-linked Immunoabsorbent Assay Western Blot (Recombinant protein) Antibody Production Protein Array
Notes	Best use within three months from the date of receipt of this protein.
Storage	Store at -80 centigrade. Aliquot to avoid repeated freezing and thawing.
Storage Buffer	50 mM Tris-HCl, 10 mM reduced Glutathione, pH=8.0 in the elution buffer.

GENE INFORMATION

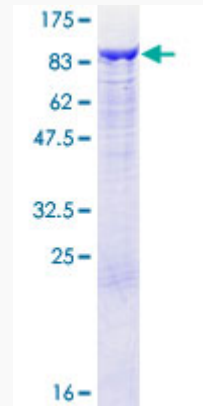
Gene Name	GCLC glutamate-cysteine ligase, catalytic subunit [Homo sapiens]
Official Symbol	GCLC
Synonyms	GCLC; glutamate-cysteine ligase, catalytic subunit; GLCL, GLCLC; glutamate--cysteine ligase catalytic subunit; GCS; gamma-ECS; GCS heavy chain; gamma-glutamylcysteine synthetase; GCL; GLCL; GLCLC;
Gene ID	2729
mRNA Refseq	NM_001197115

Protein Refseq NP_001184044

MIM 606857

UniProt ID P48506

**Quality Control
Testing**



12.5% SDS-PAGE Stained with Coomassie Blue.

 Tel: 1-631-559-9269 1-516-512-3133

 Email: info@creative-biomart.com  Fax: 1-631-938-8127

 45-1 Ramsey Road, Shirley, NY 11967, USA