

Recombinant Full Length Human GCLC Protein, C-Flag-tagged

Cat. No. GCLC-881HFL **Lot. No.** (See product label)

SPECIFICATION

Product Overview	Recombinant Full Length Human GCLC Protein, fused to Flag-tag at C-terminus, was expressed in Mammalian cells.
Species	Human
Source	Mammalian Cells
Description	Glutamate-cysteine ligase, also known as gamma-glutamylcysteine synthetase is the first rate-limiting enzyme of glutathione synthesis. The enzyme consists of two subunits, a heavy catalytic subunit and a light regulatory subunit. This locus encodes the catalytic subunit, while the regulatory subunit is derived from a different gene located on chromosome 1p22-p21. Mutations at this locus have been associated with hemolytic anemia due to deficiency of gamma-glutamylcysteine synthetase and susceptibility to myocardial infarction.
Form	25 mM Tris HCl, pH 7.3, 100 mM glycine, 10% glycerol.
Molecular Mass	72.6 kDa
AA Sequence	MGLLSQGSPLSWEETKRHADHVRRHGILQFLHIYHAVKDRHKDVLKWGDEVEYMLV SFDHENKKVRLVLS GEKVLETLQEKGERTNPNHPTLWRPEYGSYMIEGTPGQPYG GTMSEFNTVEANMRKRRKEATSILEENQA LCTITSFPRLGCPGFTLPEVKPNPVEG GASKSLFFPDEAINKHPRFSTLTRNIRHRRGEKVVINVPIFKD KNTSPPIETFTEDDE ASRASKPDHIYMDAMGFGMGNCCLQVTFQACSEARYLYDQLATICPIVMALS AAS PFYRGYVSDIDCRWGVISASVDDRTREERGLEPLKNNNYRISKSRYSIDSYLSKCG

 Tel: 1-631-559-9269 1-516-512-3133

 Email: info@creative-biomart.com  Fax: 1-631-938-8127

 45-1 Ramsey Road, Shirley, NY 11967, USA

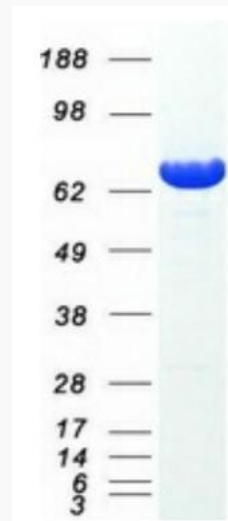
EKYNDIDLTI DKEIYEQLLQEGIDHLLAQHVAHLFIRDPLTLFEEKIHLDDANESDHFE
 NIQSTNWQTMRFKPPPPNSDI GWRVEFRPMEVQLTDFENSAYVVFVLLTRVILSY
 KLDFLIPLSKVDENMKVAQKRDAVLQGMFYFRKDI CKGGNAVVDGCGKAQNSTELA
 AEEYTLMSIDTIINGKEGVFPGLIPILNSYLENMEVDVDTRCSILNYLK LIKKRASGELM
 TVARWMREFIANHPDYKQDSVITDEMNYSLILKCNQIANELCEPELLGSAFRKVKY
 SG
 SKTDSSNTRTRPLEQKLISEEDLAANDILDYKDDDDKV

Purity	> 80% as determined by SDS-PAGE and Coomassie blue staining.
Stability	Stable for 12 months from the date of receipt of the product under proper storage and handling conditions. Avoid repeated freeze-thaw cycles.
Storage	Store at -80 centigrade.
Concentration	>50 ug/mL as determined by microplate BCA method.
Preparation	Recombinant protein was captured through anti-DDK affinity column followed by conventional chromatography steps.
Protein Families	Druggable Genome
Protein Pathways	Glutathione metabolism, Metabolic pathways
Full Length	Full L.

GENE INFORMATION

Gene Name	GCLC glutamate-cysteine ligase catalytic subunit [Homo sapiens (human)]
Official Symbol	GCLC

Synonyms	GCL; GCS; GLCL; GLCLC
Gene ID	2729
mRNA Refseq	NM_001498.4
Protein Refseq	NP_001489.1
MIM	606857
UniProt ID	P48506



Coomassie blue staining of purified GCLC protein.

 Tel: 1-631-559-9269 1-516-512-3133

 Email: info@creative-biomart.com  Fax: 1-631-938-8127

 45-1 Ramsey Road, Shirley, NY 11967, USA