

## Recombinant Human GCLM protein, His-tagged

**Cat. No.** GCLM-5456H    **Lot. No.** (See product label)

### SPECIFICATION

<b>Product Overview</b>	Recombinant Human GCLM protein(P48507)(289aa), fused with N-terminal His tag, was expressed in E. coli.
<b>Species</b>	Human
<b>Source</b>	E.coli
<b>Protein Length</b>	289aa(including fusion tag)
<b>Tag</b>	N-His
<b>Form</b>	20mM Tris.Cl, 50mM NaCl, 50% Glycerol, pH8.0.
<b>Molecular Mass</b>	32.6kDa(including fusion tag)
<b>Storage</b>	Store at -80°C and avoid repeated freeze-thaw cycles.
<b>Reconstitution</b>	It is recommended that sterile water be added to the vial to prepare a stock solution of 0.2 ug/ul. Centrifuge the vial at 4°C before opening to recover the entire contents.

### GENE INFORMATION

<b>Gene Name</b>	GCLM glutamate-cysteine ligase, modifier subunit [ Homo sapiens ]
<b>Official Symbol</b>	GCLM

 Tel: 1-631-559-9269    1-516-512-3133

 Email: [info@creative-biomart.com](mailto:info@creative-biomart.com)     Fax: 1-631-938-8127

 45-1 Ramsey Road, Shirley, NY 11967, USA

**Synonyms** GCLM; glutamate-cysteine ligase, modifier subunit; GLCLR; glutamate--cysteine ligase regulatory subunit; gamma glutamylcysteine synthetase; GCS light chain; GSC light chain; gamma-ECS regulatory subunit; glutamate--cysteine ligase modifier subunit; glutamate-cysteine ligase regulatory protein; gamma-glutamylcysteine synthetase regulatory subunit; glutamate-cysteine ligase (gamma-glutamylcysteine synthetase), regulatory (30.8kD);

**Gene ID** 2730

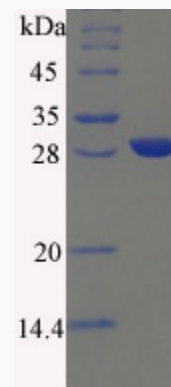
**mRNA Refseq** NM\_002061

**Protein Refseq** NP\_002052

**MIM** 601176

**UniProt ID** P48507

**SDS-PAGE**



 Tel: 1-631-559-9269 1-516-512-3133

 Email: [info@creative-biomart.com](mailto:info@creative-biomart.com)  Fax: 1-631-938-8127

 45-1 Ramsey Road, Shirley, NY 11967, USA