

## Recombinant Human GDAP1 Protein, GST-tagged

**Cat. No.** GDAP1-4811H    **Lot. No.** (See product label)

### SPECIFICATION

<b>Product Overview</b>	Human GDAP1 full-length ORF ( AAH24939, 1 a.a. - 290 a.a.) recombinant protein with GST-tag at N-terminal.
<b>Species</b>	Human
<b>Source</b>	Wheat Germ
<b>Description</b>	This gene encodes a member of the ganglioside-induced differentiation-associated protein family, which may play a role in a signal transduction pathway during neuronal development. Mutations in this gene have been associated with various forms of Charcot-Marie-Tooth Disease and neuropathy. Two transcript variants encoding different isoforms have been identified for this gene. [provided by RefSeq
<b>Molecular Mass</b>	57.64 kDa
<b>AA Sequence</b>	MRLNSTGEVPVLIHGENIICEATQIIDYLEQTFDERTPRLMPDKESMYYPVQHYRE LLDSLPMDAYTHGCILHPELTVDSMIPAYATTRIRSQIGNTESELKKLAEENPDLQEAY IAKQKRLKSKLLDHDNVKYLKILDELEKVLQVETELQRRNEETPEEGQQPWLCGE SFTLADVSLAVTLHRLKFLGFARRNWGNKRPNLETYYERVLKRKTFNKVLGHVNNI LISAVLPTAFRVAKKRAPKVLGTTLVVGLLAGVGYFAFMLFRKRLGSMILAFRPRPNY F
<b>Applications</b>	Enzyme-linked Immunoabsorbent Assay Western Blot (Recombinant protein) Antibody Production

 Tel: 1-631-559-9269    1-516-512-3133

 Email: [info@creative-biomart.com](mailto:info@creative-biomart.com)     Fax: 1-631-938-8127

 45-1 Ramsey Road, Shirley, NY 11967, USA

**Protein Array**

<b>Notes</b>	Best use within three months from the date of receipt of this protein.
<b>Storage</b>	Store at -80 centigrade. Aliquot to avoid repeated freezing and thawing.
<b>Storage Buffer</b>	50 mM Tris-HCl, 10 mM reduced Glutathione, pH=8.0 in the elution buffer.

**GENE INFORMATION**

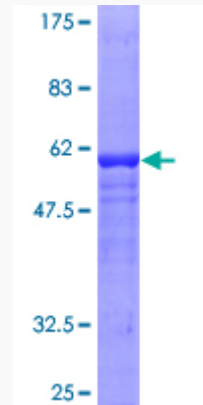
<b>Gene Name</b>	GDAP1 ganglioside induced differentiation associated protein 1 [ Homo sapiens ]
<b>Official Symbol</b>	GDAP1
<b>Synonyms</b>	GDAP1; ganglioside induced differentiation associated protein 1; Charcot Marie Tooth neuropathy 4A, CMT4A; ganglioside-induced differentiation-associated protein 1; CMT4; Charcot-Marie-Tooth neuropathy 4A; ganglioside differentiation associated protein 1; CMT4A; CMTRIA;
<b>Gene ID</b>	54332
<b>mRNA Refseq</b>	NM_001040875
<b>Protein Refseq</b>	NP_001035808
<b>MIM</b>	606598
<b>UniProt ID</b>	Q8TB36

 Tel: 1-631-559-9269 1-516-512-3133

 Email: [info@creative-biomart.com](mailto:info@creative-biomart.com)  Fax: 1-631-938-8127

 45-1 Ramsey Road, Shirley, NY 11967, USA

**Quality Control  
Testing**



12.5% SDS-PAGE Stained with Coomassie Blue.

 Tel: 1-631-559-9269 1-516-512-3133

 Email: [info@creative-biomart.com](mailto:info@creative-biomart.com)  Fax: 1-631-938-8127

 45-1 Ramsey Road, Shirley, NY 11967, USA