

Recombinant Human GDE1 Protein, Myc/DDK-tagged, C13 and N15-labeled

Cat. No. GDE1-6013H **Lot. No.** (See product label)

SPECIFICATION

Product Overview	GDE1 MS Standard C13 and N15-labeled recombinant protein (NP_057725) with a C-terminal MYC/DDK tag, was expressed in HEK293 cells.
Species	Human
Source	HEK293
Description	GDE1 (Glycerophosphodiester Phosphodiesterase 1) is a Protein Coding gene. Among its related pathways are PI Metabolism and Metabolism. Gene Ontology (GO) annotations related to this gene include phosphoric diester hydrolase activity and glycerophosphoinositol glycerophosphodiesterase activity. An important paralog of this gene is GDPD5.
Molecular Mass	37.7 kDa
AA Sequence	MWLWEDQGGLLGPFSFLLLVLVVTRSPVNACLLTGSLFVLLRVFSFEPVPSCRALQ VLKPRDRISAIAHRGGSHDAPENTLAAIRQAAKNGATGVELDIEFTSDGIPVLMHDNT VDRTTDGTGRLCDLTFEQIRKLNPAANHRLRNDPDEKIPTLREAVAECLNHNLTIFF DVKGHAHKATEALKKMYMEFPQLYNNSVCSFLPEVIYKMRQTDRDVITALTHRPW SLSHTGDGKPRYDTFWKHFIFVMMDILLDWSMHNILWYLCGISAFMLMQKDFVSPAYL KKWSAKGIQVVGWTVNTFDEKSYYESHLGSSYITDSMVEDCEPHFTRTRPLEQKLIS EEDLAANDILDYKDDDDKV
Purity	> 80% as determined by SDS-PAGE and Coomassie blue staining

 Tel: 1-631-559-9269 1-516-512-3133

 Email: info@creative-biomart.com  Fax: 1-631-938-8127

 45-1 Ramsey Road, Shirley, NY 11967, USA

Stability	Stable for 3 months from receipt of products under proper storage and handling conditions.
Storage	Store at -80 centigrade. Avoid repeated freeze-thaw cycles.
Concentration	50 µg/mL as determined by BCA
Storage Buffer	100 mM glycine, 25 mM Tris-HCl, pH 7.3.

GENE INFORMATION

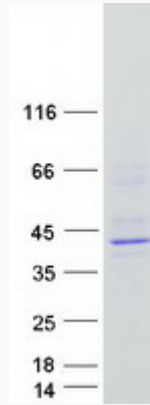
Gene Name	GDE1 glycerophosphodiester phosphodiesterase 1 [Homo sapiens (human)]
Official Symbol	GDE1
Synonyms	GDE1; glycerophosphodiester phosphodiesterase 1; membrane interacting protein of RGS16; MIR16; RGS16-interacting membrane protein; membrane-interacting protein of RGS16; 363E6.2;
Gene ID	51573
mRNA Refseq	NM_016641
Protein Refseq	NP_057725
MIM	605943
UniProt ID	Q9NZC3

 Tel: 1-631-559-9269 1-516-512-3133

 Email: info@creative-biomart.com  Fax: 1-631-938-8127

 45-1 Ramsey Road, Shirley, NY 11967, USA

SDS-PAGE



 Tel: 1-631-559-9269 1-516-512-3133

 Email: info@creative-biomart.com  Fax: 1-631-938-8127

 45-1 Ramsey Road, Shirley, NY 11967, USA