

Recombinant Human GDF1 Protein, GST-tagged

Cat. No. GDF1-4817H Lot. No. (See product label)

SPECIFICATION

Product Overview	Human GDF1 full-length ORF (AAH22450.1, 1 a.a. - 337 a.a.) recombinant protein with GST-tag at N-terminal.
Species	Human
Source	Wheat Germ
Description	This gene encodes a member of the bone morphogenetic protein (BMP) family and the TGF-beta superfamily. This group of proteins is characterized by a polybasic proteolytic processing site that is cleaved to produce a mature protein containing seven conserved cysteine residues. The members of this family are regulators of cell growth and differentiation in both embryonic and adult tissues. Studies in rodents suggest that this protein is involved in the establishment of left-right asymmetry in early embryogenesis and in neural development in later embryogenesis. This protein is transcribed from a bicistronic mRNA that also encodes the longevity assurance gene. [provided by RefSeq]
Molecular Mass	64.4 kDa
AA Sequence	MAAAGPAAGPTGPEPMPSYAQLVQRGWGSALAAARGCTDCGWGLARRGLAEHA HLAPPELLLLALGALGWTALRSAATARLFRPLAKRCCLQPRDAAKMPESAWKFLFYL CSWSYSAYLLFGTDYPPFFHDPPSVFYDWTGMAVPRDIAAAAYLLQGSFYGHSIYATL YMDTWRKDSVVMLLHHVVTLLIVSSYAFRYHNVGILVFLHDISDVQLEFTKLNIFYK SRGGSYHRLHALAADLGCLSFGFSWFWFRLYWFLPKVLYATSHCSLRTVPDIPFYF

 Tel: 1-631-559-9269 1-516-512-3133

 Email: info@creative-biomart.com  Fax: 1-631-938-8127

 45-1 Ramsey Road, Shirley, NY 11967, USA

FFNALLLLLTLMNLYWFLYIVAFAAKVLGTGQVHELKDLREYDTAEAQSLKPSKAE

Applications

Enzyme-linked Immunoabsorbent Assay
 Western Blot (Recombinant protein)
 Antibody Production
 Protein Array

Notes

Best use within three months from the date of receipt of this protein.

Storage

Store at -80 centigrade. Aliquot to avoid repeated freezing and thawing.

Storage Buffer

50 mM Tris-HCl, 10 mM reduced Glutathione, pH=8.0 in the elution buffer.

GENE INFORMATION

Gene Name

[GDF1 growth differentiation factor 1 \[Homo sapiens \]](#)

Official Symbol

[GDF1](#)

Synonyms

GDF1; growth differentiation factor 1; embryonic growth/differentiation factor 1; GDF-1; DORV; DTGA3;

Gene ID

[2657](#)

mRNA Refseq

[NM_001492](#)

Protein Refseq

[NP_001483](#)

MIM

[602880](#)

UniProt ID

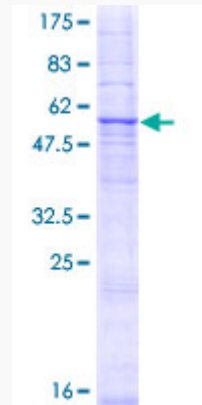
[P27539](#)

 Tel: 1-631-559-9269 1-516-512-3133

 Email: info@creative-biomart.com  Fax: 1-631-938-8127

 45-1 Ramsey Road, Shirley, NY 11967, USA

**Quality Control
Testing**



12.5% SDS-PAGE Stained with Coomassie Blue.

 Tel: 1-631-559-9269 1-516-512-3133

 Email: info@creative-biomart.com  Fax: 1-631-938-8127

 45-1 Ramsey Road, Shirley, NY 11967, USA