

Recombinant Active Human GDF11 Protein, His-tagged(C-ter)

Cat. No. GDF11-103H Lot. No. (See product label)

SPECIFICATION

Product Overview	Recombinant Active Human GDF11 Protein with His tag (C-ter) was expressed in E. coli.
Species	Human
Source	E.coli
Description	The protein encoded by this gene is a member of the bone morphogenetic protein (BMP) family and the TGF-beta superfamily. This group of proteins is characterized by a polybasic proteolytic processing site which is cleaved to produce a mature protein containing seven conserved cysteine residues. The members of this family are regulators of cell growth and differentiation in both embryonic and adult tissues. Studies in mice and Xenopus suggest that this protein is involved in mesodermal formation and neurogenesis during embryonic development. [provided by RefSeq, Jul 2008]
Form	Powder
Bio-activity	Determined by its ability to induce alkaline phosphatase production by ATDC5 cells. The ED50 for this effect is < 11 ng/mL. Determined by its ability to induce hemoglobin expression in K562 cells. The ED50 for this effect is < 4 ng/mL.
AA Sequence	MNLGLDCDEHSSSRCCRYPLTVDFEAFGWDWIIAPKRYKANYCSGQCEYMFQMQLY YPHTHLVQQANPRGSAGPCCTPTKMSPINMLYFNDKQQIIYGKIPGMVVDRCGCS

 Tel: 1-631-559-9269 1-516-512-3133

 Email: info@creative-biomart.com  Fax: 1-631-938-8127

 45-1 Ramsey Road, Shirley, NY 11967, USA

Endotoxin	Endotoxin level is less than 0.1 EU/μg of the protein, as determined by the LAL test.
Purity	> 98% (by SDS-PAGE)
Applications	SDS-PAGE
Notes	For laboratory research only, not for drug, diagnostic or other use.
Storage	Lyophilized protein should be stored at -20°C. After reconstitution, aliquot and store at -20°C or -80°C for up to one month. Storage in frost free freezers is not recommended. Avoid repeated freeze/thaw cycles. Suggest spin the vial prior to opening.
Storage Buffer	20 mM Sodium citrate (pH 3.5) and 0.2 M NaCl.
Reconstitution	It is recommended to reconstitute the lyophilized protein in sterile water to a concentration not less than 100 μg/mL and incubate the stock solution for at least 20 min at room temperature to make sure the protein is dissolved completely.

GENE INFORMATION

Gene Name	GDF11 growth differentiation factor 11 [Homo sapiens]
Official Symbol	GDF11
Synonyms	GDF11; growth differentiation factor 11; growth/differentiation factor 11; BMP 11; GDF-11; bone morphogenetic protein 11; BMP11; BMP-11;
Gene ID	10220
mRNA Refseq	NM_005811

 Tel: 1-631-559-9269 1-516-512-3133

 Email: info@creative-biomart.com  Fax: 1-631-938-8127

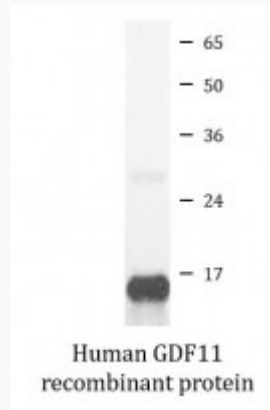
 45-1 Ramsey Road, Shirley, NY 11967, USA

Protein Refseq NP_005802

MIM 603936

UniProt ID O95390

SDS-PAGE



 Tel: 1-631-559-9269 1-516-512-3133

 Email: info@creative-biomart.com  Fax: 1-631-938-8127

 45-1 Ramsey Road, Shirley, NY 11967, USA