

## Recombinant Human GDF11 Protein

Cat. No. GDF11-155H Lot. No. (See product label)

### SPECIFICATION

<b>Product Overview</b>	Recombinant Human Growth differentiation factor 11 is produced by our Mammalian expression system and the target gene encoding Asn299-Ser407 is expressed.
<b>Species</b>	Human
<b>Source</b>	Human Cells
<b>ProteinLength</b>	299-407 a.a.
<b>Description</b>	Growth/differentiation factor 11(GDF-11) is a secreted protein, which belongs to the transforming growth factor beta superfamily. GDF-11 controls anterior-posterior patterning by regulating the expression of Hox genes. The secreted signal acts globally to specify positional identity along the anterior/posterior axis during development. GDF11 has been shown to suppress neurogenesis through a pathway similar to that of myostatin, including stopping the progenitor cell-cycle during G-phase. The similarities between GDF11 and myostatin imply a likelihood that the same regulatory mechanisms are used to control tissue size during both muscular and neural development.
<b>Form</b>	Lyophilized from a 0.2 um filtered solution of PBS, pH7.4.
<b>AA Sequence</b>	Asn299-Ser407
<b>Endotoxin</b>	Less than 0.1 ng/ug (1 EU/ug).

 Tel: 1-631-559-9269 1-516-512-3133

 Email: [info@creative-biomart.com](mailto:info@creative-biomart.com)  Fax: 1-631-938-8127

 45-1 Ramsey Road, Shirley, NY 11967, USA

<b>Purity</b>	>95%
<b>Storage</b>	<p>Lyophilized protein should be stored at &lt; -20 centigrade, though stable at room temperature for 3 weeks.</p> <p>Reconstituted protein solution can be stored at 4-7 centigrade for 2-7 days. Aliquots of reconstituted samples are stable at &lt; -20 centigrade for 3 months.</p> <p>Always centrifuge tubes before opening. Do not mix by vortex or pipetting.</p>
<b>Reconstitution</b>	<p>It is not recommended to reconstitute to a concentration less than 100µg/ml.</p> <p>Dissolve the lyophilized protein in distilled water.</p> <p>Please aliquot the reconstituted solution to minimize freeze-thaw cycles.</p>
<b>Quality Statement</b>	Purity: greater than 95% as determined by reducing SDS-PAGE.
<b>Shipping</b>	<p>The product is shipped at ambient temperature.</p> <p>Upon receipt, store it immediately at the temperature listed below.</p>

## GENE INFORMATION

<b>Gene Name</b>	GDF11 growth differentiation factor 11 [ Homo sapiens (human) ]
<b>Official Symbol</b>	GDF11
<b>Synonyms</b>	Growth/differentiation factor 11; GDF-11; Bone morphogenetic protein 11; BMP-11; VHO; BMP11
<b>Gene ID</b>	10220
<b>mRNA Refseq</b>	NM_005811.5
<b>Protein Refseq</b>	NP_005802.1

 Tel: 1-631-559-9269 1-516-512-3133

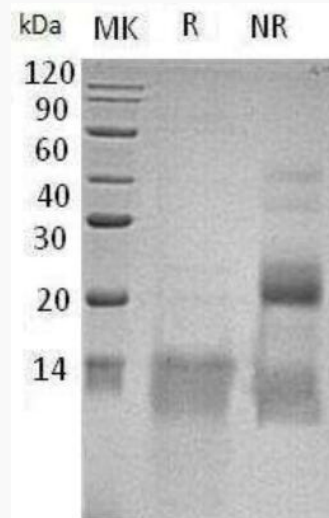
 Email: [info@creative-biomart.com](mailto:info@creative-biomart.com)  Fax: 1-631-938-8127

 45-1 Ramsey Road, Shirley, NY 11967, USA

MIM 603936

UniProt ID O95390

SDS-PAGE



 Tel: 1-631-559-9269 1-516-512-3133

 Email: [info@creative-biomart.com](mailto:info@creative-biomart.com)  Fax: 1-631-938-8127

 45-1 Ramsey Road, Shirley, NY 11967, USA