

## Recombinant Human GDF11 Protein, GST-tagged

Cat. No. GDF11-4820H Lot. No. (See product label)

### SPECIFICATION

<b>Product Overview</b>	Human GDF11 partial ORF ( NP_005802, 310 a.a. - 407 a.a.) recombinant protein with GST-tag at N-terminal.
<b>Species</b>	Human
<b>Source</b>	Wheat Germ
<b>Description</b>	The protein encoded by this gene is a member of the bone morphogenetic protein (BMP) family and the TGF-beta superfamily. This group of proteins is characterized by a polybasic proteolytic processing site which is cleaved to produce a mature protein containing seven conserved cysteine residues. The members of this family are regulators of cell growth and differentiation in both embryonic and adult tissues. Studies in mice and Xenopus suggest that this protein is involved in mesodermal formation and neurogenesis during embryonic development. [provided by RefSeq]
<b>Molecular Mass</b>	36.52 kDa
<b>AA Sequence</b>	ESRCCRYPLTVDFEAFGWDWIIAPKRYKANYCSGQCEYMFQMYPHTHLVQQANP RGSAGPCCTPTKMSPINMLYFNDKQQIIYGKIPGMVVDRCGCS
<b>Applications</b>	Enzyme-linked Immunoabsorbent Assay Western Blot (Recombinant protein) Antibody Production Protein Array

 Tel: 1-631-559-9269 1-516-512-3133

 Email: [info@creative-biomart.com](mailto:info@creative-biomart.com)  Fax: 1-631-938-8127

 45-1 Ramsey Road, Shirley, NY 11967, USA

<b>Notes</b>	Best use within three months from the date of receipt of this protein.
<b>Storage</b>	Store at -80 centigrade. Aliquot to avoid repeated freezing and thawing.
<b>Storage Buffer</b>	50 mM Tris-HCl, 10 mM reduced Glutathione, pH=8.0 in the elution buffer.

## GENE INFORMATION

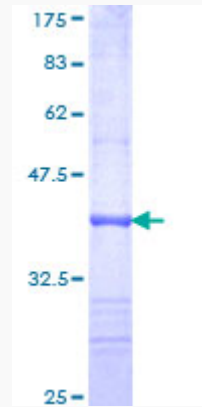
<b>Gene Name</b>	GDF11 growth differentiation factor 11 [ Homo sapiens ]
<b>Official Symbol</b>	GDF11
<b>Synonyms</b>	GDF11; growth differentiation factor 11; growth/differentiation factor 11; BMP 11; GDF-11; bone morphogenetic protein 11; BMP11; BMP-11;
<b>Gene ID</b>	10220
<b>mRNA Refseq</b>	NM_005811
<b>Protein Refseq</b>	NP_005802
<b>MIM</b>	603936
<b>UniProt ID</b>	O95390

 Tel: 1-631-559-9269 1-516-512-3133

 Email: [info@creative-biomart.com](mailto:info@creative-biomart.com)  Fax: 1-631-938-8127

 45-1 Ramsey Road, Shirley, NY 11967, USA

**Quality Control  
Testing**



12.5% SDS-PAGE Stained with Coomassie Blue.

 Tel: 1-631-559-9269 1-516-512-3133

 Email: [info@creative-biomart.com](mailto:info@creative-biomart.com)  Fax: 1-631-938-8127

 45-1 Ramsey Road, Shirley, NY 11967, USA