

Recombinant Human GDF15 Protein

Cat. No. GDF15-0067H Lot. No. (See product label)

SPECIFICATION

Product Overview	Recombinant Human GDF15 Protein without tag was expressed in HEK293.
Species	Human
Source	HEK293
Description	This gene encodes a secreted ligand of the TGF-beta (transforming growth factor-beta) superfamily of proteins. Ligands of this family bind various TGF-beta receptors leading to recruitment and activation of SMAD family transcription factors that regulate gene expression. The encoded preproprotein is proteolytically processed to generate each subunit of the disulfide-linked homodimer. The protein is expressed in a broad range of cell types, acts as a pleiotropic cytokine and is involved in the stress response program of cells after cellular injury. Increased protein levels are associated with disease states such as tissue hypoxia, inflammation, acute injury and oxidative stress.
Applications	ELISA, CLIA, CG
Notes	For research use only, not for use in diagnostic procedure.
Storage	Short term (up to 7 days) store at 2–8 centigrade. Long term, store at - 20 centigrade. Avoid multiple freeze/thaw cycles.
Storage Buffer	Supplied as a 0.2 µm filtered solution of PBS, pH7.4

 Tel: 1-631-559-9269 1-516-512-3133

 Email: info@creative-biomart.com  Fax: 1-631-938-8127

 45-1 Ramsey Road, Shirley, NY 11967, USA

GENE INFORMATION

Gene Name GDF15 growth differentiation factor 15 [Homo sapiens (human)]

Official Symbol GDF15

Synonyms GDF15; growth differentiation factor 15; growth/differentiation factor 15; MIC 1; MIC1; NAG 1; PDF; PLAB; prostate differentiation factor; PTGFB; NRG-1; PTGF-beta; placental TGF-beta; NSAID-activated gene 1 protein; NSAID-regulated gene 1 protein; macrophage inhibitory cytokine 1; placental bone morphogenetic protein; NSAID (nonsteroidal anti-inflammatory drug)-activated protein 1; MIC-1; NAG-1; GDF-15;

Gene ID 9518

mRNA Refseq NM_004864

Protein Refseq NP_004855

MIM 605312

UniProt ID Q99988

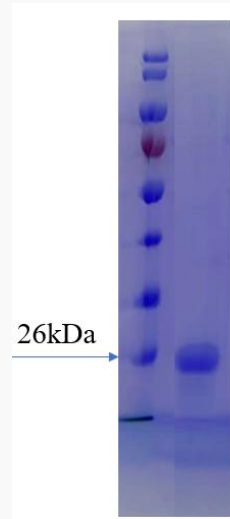
 Tel: 1-631-559-9269 1-516-512-3133

 Email: info@creative-biomart.com  Fax: 1-631-938-8127

 45-1 Ramsey Road, Shirley, NY 11967, USA



SDS-PAGE



Tel: 1-631-559-9269 1-516-512-3133

Email: info@creative-biomart.com Fax: 1-631-938-8127

45-1 Ramsey Road, Shirley, NY 11967, USA