

Recombinant Canine GDF15 protein, His-tagged

Cat. No. GDF15-1515C Lot. No. (See product label)

SPECIFICATION

Product Overview	Recombinant Canine GDF15 protein(A0A8C0TNP6)(Ala197-Val307), fused with N-terminal His tag, was expressed in E.coli.
Species	Canine
Source	N-His
ProteinLength	Ala197-Val307
Tag	N-His
Form	Lyophilized from 0.22µm filtered solution in 50mM HAc (pH 2.9). Normally 8% trehalose is added as protectant before lyophilization.
Bio-activity	Immobilized Canine GDF15, His Tag at 1µg/ml (100µl/Well) on the plate. Dose response curve for Anti-GDF15 Antibody, hFc Tag with the EC50 of 5.1ng/ml determined by ELISA.
Molecular Mass	The protein has a predicted MW of 13.12 kDa. The protein migrates to 15-20 kDa under reduced (R) condition and 23-26 kDa under Non reducing (N) condition based on Tris-Bis PAGE result.
Endotoxin	Less than 1EU per µg by the LAL method.
Purity	> 95% as determined by Tris-Bis PAGE.

 Tel: 1-631-559-9269 1-516-512-3133

 Email: info@creative-biomart.com  Fax: 1-631-938-8127

 45-1 Ramsey Road, Shirley, NY 11967, USA

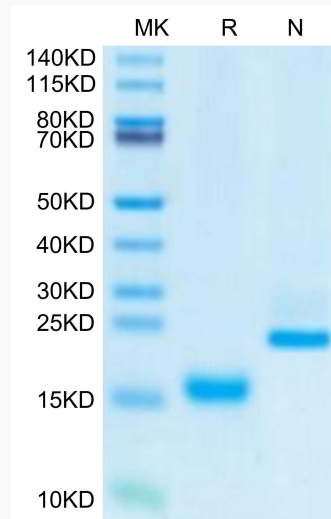
Storage

Reconstituted protein stable at -80°C for 12 months, 4°C for 1 week. Use a manual defrost freezer and avoid repeated freeze-thaw cycles.

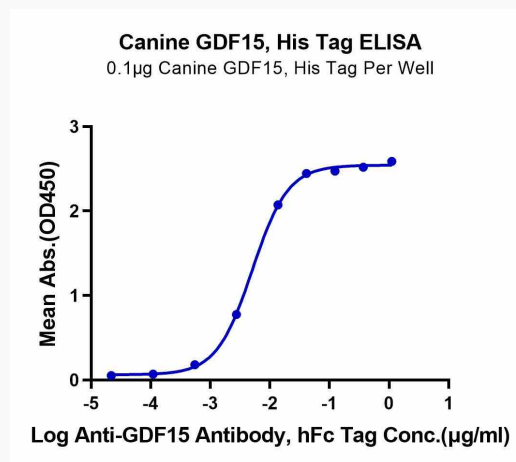
Reconstitution

Centrifuge tubes before opening. Reconstituting to a concentration more than 100 µg/ml is recommended. Dissolve the lyophilized protein in 50mM HAc (pH 2.9).

Tris-Bis PAGE



ELISA



Tel: 1-631-559-9269 1-516-512-3133

Email: info@creative-biomart.com Fax: 1-631-938-8127

45-1 Ramsey Road, Shirley, NY 11967, USA