

Recombinant Human GDF15 protein, His-Avi-tagged, Biotinylated

Cat. No. GDF15-1724H Lot. No. (See product label)

SPECIFICATION

Product Overview	Biotinylated Recombinant Human GDF15 protein(Q99988-1)(Ala197-Ile308), fused with N-terminal His and Avi tag, was expressed in E.coli.
Species	Human
Source	HEK293
ProteinLength	Ala197-Ile308
Tag	N-His-Avi
Conjugation/Label	Biotin
Form	Lyophilized from 0.22µm filtered solution in 50mM HAc (pH 2.9). Normally 8% trehalose is added as protectant before lyophilization.
Bio-activity	Immobilized Human GFRAL, hFc Tag at 1 µg/ml (100 µl/Well) on the plate. Dose response curve for Biotinylated Human GDF15, His Tag with the EC50 of 24 ng/ml determined by ELISA.
Molecular Mass	The protein has a predicted MW of 15.19 kDa same as Tris-Bis PAGE result.
Endotoxin	Less than 1EU per µg by the LAL method.

 Tel: 1-631-559-9269 1-516-512-3133

 Email: info@creative-biomart.com  Fax: 1-631-938-8127

 45-1 Ramsey Road, Shirley, NY 11967, USA

Purity	> 95% as determined by Tris-Bis PAGE.
Storage	Reconstituted protein stable at -80°C for 12 months, 4°C for 1 week. Use a manual defrost freezer and avoid repeated freeze-thaw cycles.
Reconstitution	Centrifuge tubes before opening. Reconstituting to a concentration more than 100 µg/ml is recommended. Dissolve the lyophilized protein in 50mM HAc (pH 2.9).
Conjugation	Biotin

GENE INFORMATION

Gene Name	GDF15 growth differentiation factor 15 [Homo sapiens]
Official Symbol	GDF15
Synonyms	GDF15; growth differentiation factor 15; growth/differentiation factor 15; MIC 1; MIC1; NAG 1; PDF; PLAB; prostate differentiation factor; PTGFB; NRG-1; PTGF-beta; placental TGF-beta; NSAID-activated gene 1 protein; NSAID-regulated gene 1 protein; macrophage inhibitory cytokine 1; placental bone morphogenetic protein; NSAID (nonsteroidal anti-inflammatory drug)-activated protein 1; MIC-1; NAG-1; GDF-15;
Gene ID	9518
mRNA Refseq	NM_004864
Protein Refseq	NP_004855
MIM	605312

 Tel: 1-631-559-9269 1-516-512-3133

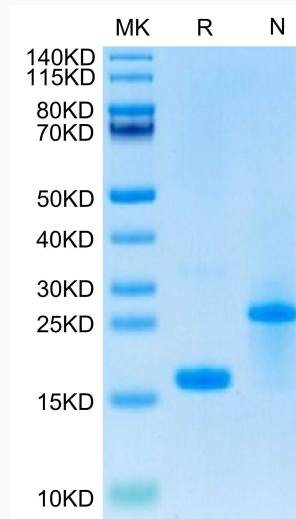
 Email: info@creative-biomart.com  Fax: 1-631-938-8127

 45-1 Ramsey Road, Shirley, NY 11967, USA

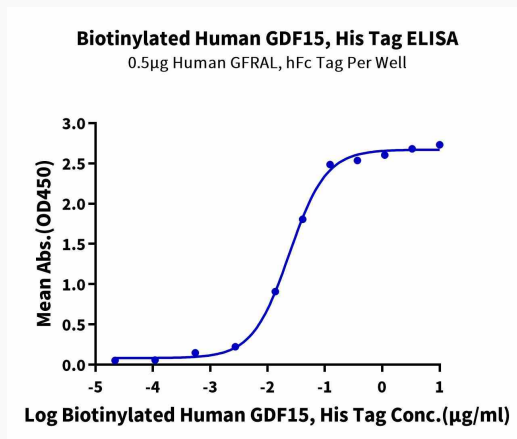
UniProt ID

Q99988

Tris-Bis PAGE



ELISA



Tel: 1-631-559-9269 1-516-512-3133

Email: info@creative-biomart.com Fax: 1-631-938-8127

45-1 Ramsey Road, Shirley, NY 11967, USA