

Recombinant Human GDF15 protein, His-tagged

Cat. No. GDF15-284H Lot. No. (See product label)

SPECIFICATION

| | |
|-------------------------|--|
| Product Overview | Recombinant Human GDF15 protein is produced by E.coli expression system. This protein is fused with a His tag at the N-terminal. |
| Species | Human |
| Source | E.coli |
| ProteinLength | Leu30-Ile308 |
| Form | PBS, pH 7.4, containing 0.01 % SKL, 1 mM DTT, 5 % Trehalose and Proclin 300. |
| Molecular Mass | 38 kDa |
| AA Sequence | LSLAEASRASFPGPSELHSEDSRFRELPKRYEDLLTRLRANQSWEDSNTDLVPAPA VRILTPEVRLGSGGHLHLRISRALPEGLPEASRLHRALFRLSPTASRSWDVTRPLR RQLSLARPQAPALHLPLSPPPSQSDQLLAESSSARPQLELHLRPQAARGRRRARAR NGDHCPLGPGRCCRLHTVRASLEDLGWADWVLSPREVQVTMCIGACPSQFRAAN MHAQIKTSLHRLKPDTVPAPCCVPASYNPMVLIQKTDGTGVS LQTYDDLLAKDCHCI |
| Endotoxin | <1.0EU per 1g (determined by the LAL method) |
| Purity | > 95 % |
| Applications | Positive Control; Immunogen; SDS-PAGE; WB. |

 Tel: 1-631-559-9269 1-516-512-3133

 Email: info@creative-biomart.com  Fax: 1-631-938-8127

 45-1 Ramsey Road, Shirley, NY 11967, USA

| | |
|-----------------------|--|
| Stability | The thermal stability is described by the loss rate. The loss rate was determined by accelerated thermal degradation test, that is, incubate the protein at 37 centigrade for 48 h, and no obvious degradation and precipitation were observed. The loss rate is less than 5 % within the expiration date under appropriate storage condition. |
| Storage | Avoid repeated freeze/thaw cycles. Store at 2-8 centigrade for one month. Aliquot and store at -80 centigrade for 12 months. |
| Storage Buffer | PBS, pH 7.4, containing 0.01 % SKL, 1 mM DTT, 5 % Trehalose and Proclin 300. |
| Reconstitution | Reconstitute in 20mM Tris, 150mM NaCl (pH8.0) to a concentration of 0.1-1.0 mg/mL. Do not vortex. |

GENE INFORMATION

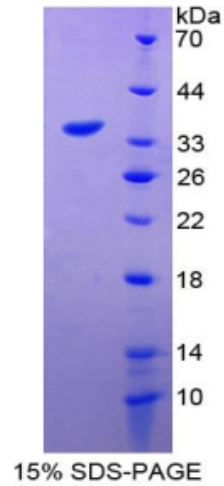
| | |
|------------------------|--|
| Gene Name | GDF15 growth differentiation factor 15 [Homo sapiens] |
| Official Symbol | GDF15 |
| Synonyms | GDF15; MIC 1; MIC1; NAG 1; PDF; PLAB; PTGFB; NRG-1; PTGF-beta; placental TGF-beta; MIC-1; NAG-1; GDF-15; |
| Gene ID | 9518 |
| mRNA Refseq | NM_004864 |
| Protein Refseq | NP_004855 |
| MIM | 605312 |
| UniProt ID | Q99988 |


 Tel: 1-631-559-9269 1-516-512-3133

 Email: info@creative-biomart.com  Fax: 1-631-938-8127


 45-1 Ramsey Road, Shirley, NY 11967, USA

GDF15-284H, 1



 Tel: 1-631-559-9269 1-516-512-3133

 Email: info@creative-biomart.com  Fax: 1-631-938-8127

 45-1 Ramsey Road, Shirley, NY 11967, USA