

Recombinant Human GDF15 protein, His-tagged

Cat. No. GDF15-285H Lot. No. (See product label)

SPECIFICATION

Product Overview	Recombinant Human GDF15 protein is produced by E. coli expression system. This protein is fused with a His tag at N-terminal.
Species	Human
Source	E.coli
ProteinLength	Ala195-Ile308
Form	PBS, pH7.4, containing 0.01% SKL, 1mM DTT, 5% Trehalose and Proclin300.
Molecular Mass	16 kDa
AA Sequence	ARARNGDHCPLGPGRCRLHTVRASLEDLGWADWVLSPREVQVTCIGACPSQF RAANMHAQIKTSLHRLKPDTVPAPCCVPASYNPMVLIQKTDGVSLSLQTYDDLLAKDC HCl
Purity	> 95 %
Applications	Positive Control; Immunogen; SDS-PAGE; WB.
Stability	The thermal stability is described by the loss rate. The loss rate was determined by accelerated thermal degradation test, that is, incubate the protein at 37 centigrade for 48h, and no obvious degradation and precipitation were observed. The loss rate is less than 5% within the expiration date under appropriate storage condition.

 Tel: 1-631-559-9269 1-516-512-3133

 Email: info@creative-biomart.com  Fax: 1-631-938-8127

 45-1 Ramsey Road, Shirley, NY 11967, USA

Storage Avoid repeated freeze/thaw cycles. Store at 2-8 centigrade for one month. Aliquot and store at -80 centigrade for 12 months.

Reconstitution Reconstitute in 10mM PBS (pH7.4) to a concentration of 0.1-1.0 mg/mL. Do not vortex.

GENE INFORMATION

Gene Name GDF15 growth differentiation factor 15 [Homo sapiens]

Official Symbol GDF15

Synonyms GDF15; MIC 1; MIC1; NAG 1; PDF; PLAB; PTGFB; NRG-1; PTGF-beta; placental TGF-beta; MIC-1; NAG-1; GDF-15;

Gene ID 9518

mRNA Refseq NM_004864

Protein Refseq NP_004855

MIM 605312

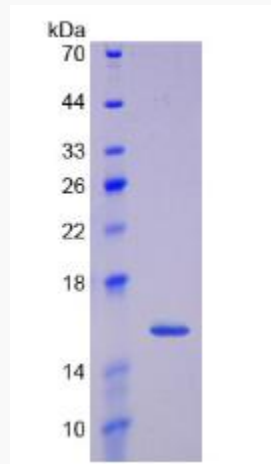
UniProt ID Q99988

 Tel: 1-631-559-9269 1-516-512-3133

 Email: info@creative-biomart.com  Fax: 1-631-938-8127

 45-1 Ramsey Road, Shirley, NY 11967, USA

GDF15-285H, 1



SDS-PAGE

 Tel: 1-631-559-9269 1-516-512-3133

 Email: info@creative-biomart.com  Fax: 1-631-938-8127

 45-1 Ramsey Road, Shirley, NY 11967, USA