

Recombinant Human GDF15 Protein, His tagged

Cat. No. GDF15-338H Lot. No. (See product label)

SPECIFICATION

Product Overview	Recombinant Human GDF15 Protein with His tag was expressed in E. coli.
Species	Human
Source	E.coli
Description	This gene encodes a secreted ligand of the TGF-beta (transforming growth factor-beta) superfamily of proteins. Ligands of this family bind various TGF-beta receptors leading to recruitment and activation of SMAD family transcription factors that regulate gene expression. The encoded preproprotein is proteolytically processed to generate each subunit of the disulfide-linked homodimer. The protein is expressed in a broad range of cell types, acts as a pleiotropic cytokine and is involved in the stress response program of cells after cellular injury. Increased protein levels are associated with disease states such as tissue hypoxia, inflammation, acute injury and oxidative stress.
Molecular Mass	The protein has a calculated MW of 13 kDa.
AA Sequence	MHHHHHHARNGDHCPLGPGRCRLHTVRASLEDLGWADWVLSPREVQVTMCIGA CPSQFRAANMHAQIKTSLHRLKPDTVPAPCCVPASYNPMVLIQKTDGTGVS LQTYDDL LAKDCHCI
Endotoxin	< 1 EU/μg by LAL
Purity	> 90% by SDS-PAGE

 Tel: 1-631-559-9269 1-516-512-3133

 Email: info@creative-biomart.com  Fax: 1-631-938-8127

 45-1 Ramsey Road, Shirley, NY 11967, USA

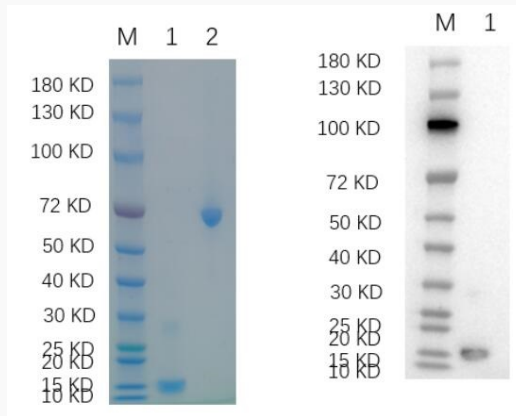
Storage	Store it under sterile conditions at -20 to -80 centigrade. It is recommended that the protein be aliquoted for optimal storage. Avoid repeated freeze-thaw cycles.
Concentration	1.3 mg/mL by BCA
Storage Buffer	Sterile 20 mM PB, 100 mM NaCl, pH6.4, 20% Glycerol
GENE INFORMATION	
Gene Name	GDF15 growth differentiation factor 15 [Homo sapiens]
Official Symbol	GDF15
Synonyms	GDF15; growth differentiation factor 15; growth/differentiation factor 15; MIC 1; MIC1; NAG 1; PDF; PLAB; prostate differentiation factor; PTGFB; NRG-1; PTGF-beta; placental TGF-beta; NSAID-activated gene 1 protein; NSAID-regulated gene 1 protein; macrophage inhibitory cytokine 1; placental bone morphogenetic protein; NSAID (nonsteroidal anti-inflammatory drug)-activated protein 1; MIC-1; NAG-1; GDF-15;
Gene ID	9518
mRNA Refseq	NM_004864
Protein Refseq	NP_004855
MIM	605312
UniProt ID	Q99988

 Tel: 1-631-559-9269 1-516-512-3133


 Email: info@creative-biomart.com  Fax: 1-631-938-8127

 45-1 Ramsey Road, Shirley, NY 11967, USA

Reducing 12% SDS-PAGE (CBB stained) and WB (Anti-His Mouse Monoclonal Antibody) analysis profile of purified GDF15.



1. GDF15-337H
2. BSA

 Tel: 1-631-559-9269 1-516-512-3133

 Email: info@creative-biomart.com  Fax: 1-631-938-8127

 45-1 Ramsey Road, Shirley, NY 11967, USA