

Active Recombinant Human GDF15 protein(H202D), hFc-tagged

Cat. No. GDF15-6743H **Lot. No.** (See product label)

SPECIFICATION

Product Overview	Active Recombinant Human GDF15 protein(Q99988)(Ala197-Ile308 (H202D)) is expressed from HEK293 with hFc (IgG1) tag at the N-terminus.
Species	Human
Source	HEK293
ProteinLength	197-308 aa(H202D)
Form	Lyophilized from 0.22 µm filtered solution in PBS (pH 7.4).
Bio-activity	Immobilized Human GFRAL, His Tag at 1µg/ml (100µl/well) on the plate. Dose response curve for Human GDF15 (H202D), hFc Tag with the EC50 of 4.1ng/ml determined by ELISA.
Molecular Mass	The protein has a predicted MW of 37.88 kDa. Due to glycosylation, the protein migrates to 40-50 kDa based on Bis-Tris PAGE result.
Endotoxin	Less than 1 EU per µg by the LAL method.
Purity	> 95% as determined by Bis-Tris PAGE > 95% as determined by HPLC
Storage	Store at -20 to -80°C for 12 months as supplied from date of receipt. -80°C for 3 months after reconstitution. Recommend to aliquot the protein into smaller quantities

 Tel: 1-631-559-9269 1-516-512-3133

 Email: info@creative-biomart.com  Fax: 1-631-938-8127

 45-1 Ramsey Road, Shirley, NY 11967, USA

for optimal storage. Please minimize freeze-thaw cycles.

Reconstitution Dissolve the lyophilized protein in distilled water.

protein Refseq-Weblink http://www.ncbi.nlm.nih.gov/protein/NP_004855.2

Unit ID Q99988

Unit ID-Weblink <http://www.uniprot.org/uniprot/Q99988>

GENE INFORMATION

Gene Name [GDF15 growth differentiation factor 15 \[Homo sapiens \]](#)

Official Symbol [GDF15](#)

Synonyms GDF15; growth differentiation factor 15; growth/differentiation factor 15; MIC 1; MIC1; NAG 1; PDF; PLAB; prostate differentiation factor; PTGFB; NRG-1; PTGF-beta; placental TGF-beta; NSAID-activated gene 1 protein; NSAID-regulated gene 1 protein; macrophage inhibitory cytokine 1; placental bone morphogenetic protein; NSAID (nonsteroidal anti-inflammatory drug)-activated protein 1; MIC-1; NAG-1; GDF-15;

Gene ID [9518](#)

mRNA Refseq [NM_004864](#)

protein Refseq [NP_004855](#)

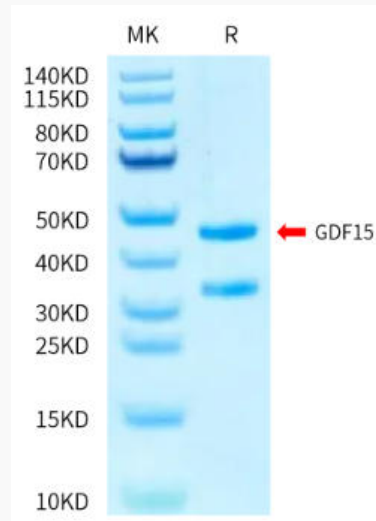
MIM [605312](#)

 Tel: 1-631-559-9269 1-516-512-3133

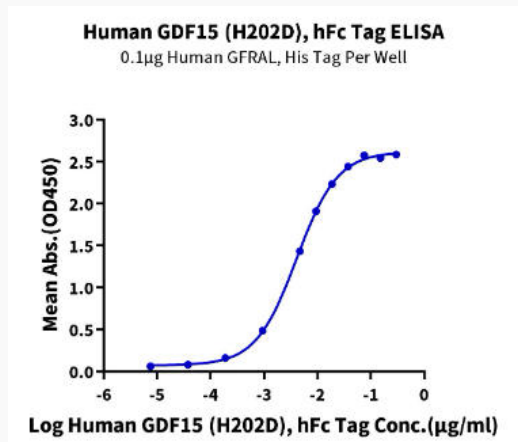
 Email: info@creative-biomart.com  Fax: 1-631-938-8127

 45-1 Ramsey Road, Shirley, NY 11967, USA

Bis-Tris PAGE



ELISA Data



 Tel: 1-631-559-9269 1-516-512-3133

 Email: info@creative-biomart.com  Fax: 1-631-938-8127

 45-1 Ramsey Road, Shirley, NY 11967, USA