

## Recombinant Human GDF15 Protein, His-tagged

Cat. No. GDF15-946H Lot. No. (See product label)

### SPECIFICATION

<b>Product Overview</b>	Recombinant Human GDF15 Protein (Ala195-Ile308) with His tag was expressed in 293F.
<b>Species</b>	Human
<b>Source</b>	HEK293
<b>ProteinLength</b>	Ala195-Ile308
<b>Description</b>	<p>This gene encodes a secreted ligand of the TGF-beta (transforming growth factor-beta) superfamily of proteins. Ligands of this family bind various TGF-beta receptors leading to recruitment and activation of SMAD family transcription factors that regulate gene expression. The encoded preproprotein is proteolytically processed to generate each subunit of the disulfide-linked homodimer. The protein is expressed in a broad range of cell types, acts as a pleiotropic cytokine and is involved in the stress response program of cells after cellular injury. Increased protein levels are associated with disease states such as tissue hypoxia, inflammation, acute injury and oxidative stress.</p>
<b>Form</b>	Freeze-dried powder
<b>Molecular Mass</b>	Predicted Molecular Mass: 14.2 kDa; Accurate Molecular Mass: 14 kDa
<b>Purity</b>	> 97%

 Tel: 1-631-559-9269 1-516-512-3133

 Email: [info@creative-biomart.com](mailto:info@creative-biomart.com)  Fax: 1-631-938-8127

 45-1 Ramsey Road, Shirley, NY 11967, USA

<b>Applications</b>	Positive Control; Immunogen; SDS-PAGE; WB.
<b>Stability</b>	The thermal stability is described by the loss rate. The loss rate was determined by accelerated thermal degradation test, that is, incubate the protein at 37 centigrade for 48h, and no obvious degradation and precipitation were observed. The loss rate is less than 5% within the expiration date under appropriate storage condition.
<b>Storage</b>	Avoid repeated freeze/thaw cycles. Store at 2-8 centigrade for one month. Aliquot and store at -80 centigrade for 12 months.
<b>Storage Buffer</b>	20mM Tris, 150mM NaCl, pH8.0, containing 1mM EDTA, 1mM DTT, 0.01% SKL, 5% Trehalose and Proclin300.
<b>Reconstitution</b>	Reconstitute in 20mM Tris, 150mM NaCl (pH8.0) to a concentration of 0.1-1.0 mg/mL. Do not vortex.

## GENE INFORMATION

<b>Gene Name</b>	GDF15 growth differentiation factor 15 [ Homo sapiens (human) ]
<b>Official Symbol</b>	GDF15
<b>Synonyms</b>	GDF15; growth differentiation factor 15; growth/differentiation factor 15; MIC 1; MIC1; NAG 1; PDF; PLAB; prostate differentiation factor; PTGFB; NRG-1; PTGF-beta; placental TGF-beta; NSAID-activated gene 1 protein; NSAID-regulated gene 1 protein; macrophage inhibitory cytokine 1; placental bone morphogenetic protein; NSAID (nonsteroidal anti-inflammatory drug)-activated protein 1; MIC-1; NAG-1; GDF-15;
<b>Gene ID</b>	9518

 Tel: 1-631-559-9269 1-516-512-3133

 Email: [info@creative-biomart.com](mailto:info@creative-biomart.com)  Fax: 1-631-938-8127

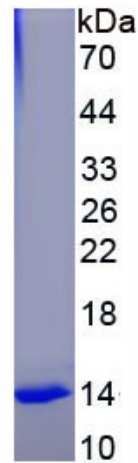
 45-1 Ramsey Road, Shirley, NY 11967, USA

mRNA Refseq [NM\\_004864](#)

Protein Refseq [NP\\_004855](#)

MIM [605312](#)

UniProt ID [Q99988](#)



 Tel: 1-631-559-9269 1-516-512-3133

 Email: [info@creative-biomart.com](mailto:info@creative-biomart.com)  Fax: 1-631-938-8127

 45-1 Ramsey Road, Shirley, NY 11967, USA