

Recombinant Human GDF2 protein

Cat. No. GDF2-070H Lot. No. (See product label)

SPECIFICATION

Product Overview	Recombinant Human GDF2 protein(Q9UK05)(Ser320-Arg429) was expressed in HEK293.
Species	Human
Source	HEK293
ProteinLength	320-429 aa
Form	Lyophilized from 0.22 µm filtered solution in 4mM HCL.
Bio-activity	Immobilized Human GDF-2, No Tag at 2µg/ml (100µl/well) on the plate. Dose response curve for Human ALK-1, His Tag with the EC50 of 33.1ng/ml determined by ELISA.
Molecular Mass	The protein has a predicted MW of 12.08 kDa. Due to glycosylation, the protein migrates to 13-15 kDa based on Bis-Tris PAGE result.
Endotoxin	Less than 1EU per µg by the LAL method.
Purity	> 95% as determined by Bis-Tris PAGE
Storage	-20 to -80°C for 12 months as supplied from date of receipt. -80°C for 3 months after reconstitution. Recommend to aliquot the protein into smaller quantities for optimal storage. Please minimize freeze-thaw cycles.

 Tel: 1-631-559-9269 1-516-512-3133

 Email: info@creative-biomart.com  Fax: 1-631-938-8127

 45-1 Ramsey Road, Shirley, NY 11967, USA

Reconstitution Centrifuge the tube before opening. Reconstituting to a concentration more than 100 µg/ml is recommended. Dissolve the lyophilized protein in 4mM HCL.

GENE INFORMATION

Gene Name GDF2 growth differentiation factor 2 [Homo sapiens]

Official Symbol GDF2

Synonyms GDF2; growth differentiation factor 2; growth/differentiation factor 2; BMP 9; BMP9; GDF-2; bone morphogenetic protein 9; BMP-9;

mRNA Refseq NM_016204

Protein Refseq NP_057288

MIM 605120

UniProt ID Q9UK05

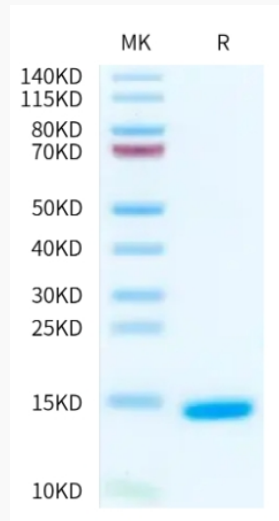
Gene ID 2658

 Tel: 1-631-559-9269 1-516-512-3133

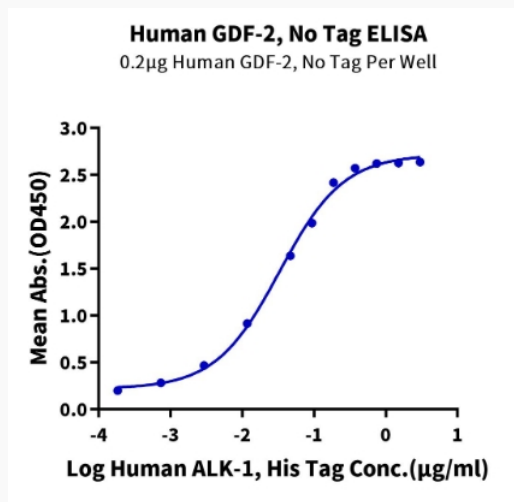
 Email: info@creative-biomart.com  Fax: 1-631-938-8127

 45-1 Ramsey Road, Shirley, NY 11967, USA

Bis-Tris PAGE



ELISA Data



 Tel: 1-631-559-9269 1-516-512-3133

 Email: info@creative-biomart.com  Fax: 1-631-938-8127

 45-1 Ramsey Road, Shirley, NY 11967, USA