

# Recombinant Human GDF2 Protein (Ser320-Arg429), C-His tagged

Cat. No. GDF2-0775H Lot. No. (See product label)

## SPECIFICATION

<b>Product Overview</b>	Recombinant human GDF2 (Ser320-Arg429) fused with the C-terminal His tag was expressed in Mammalian cells.
<b>Species</b>	Human
<b>Source</b>	Mammalian Cells
<b>ProteinLength</b>	Ser320-Arg429
<b>Form</b>	Lyophilized powder/frozen liquid
<b>Molecular Mass</b>	12.1 kDa
<b>Purity</b>	>90% as determined by SDS-PAGE.
<b>Notes</b>	For research use only.
<b>Storage</b>	Use a manual defrost freezer and avoid repeated freeze thaw cycles. Store at 2 to 8 centigrade for one week. Store at -20 to -80 centigrade for twelve months from the date of receipt.
<b>Storage Buffer</b>	Supplied as solution form in PBS or lyophilized from PBS.
<b>Reconstitution</b>	Reconstitute in sterile water for a stock solution.

 Tel: 1-631-559-9269 1-516-512-3133

 Email: [info@creative-biomart.com](mailto:info@creative-biomart.com)  Fax: 1-631-938-8127

 45-1 Ramsey Road, Shirley, NY 11967, USA

**Shipping** They are shipped out with dry ice/blue ice unless customers require otherwise.

## GENE INFORMATION

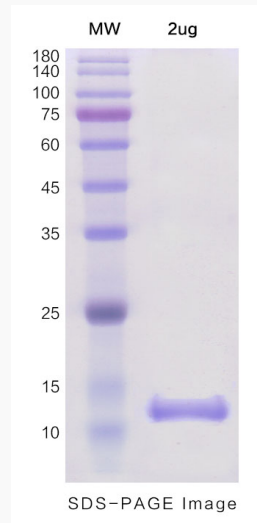
<b>Gene Name</b>	GDF2 growth differentiation factor 2 [ Homo sapiens (human) ]
<b>Official Symbol</b>	GDF2
<b>Synonyms</b>	GDF2; growth differentiation factor 2; growth/differentiation factor 2; BMP 9; BMP9; GDF-2; bone morphogenetic protein 9; BMP-9;
<b>Gene ID</b>	2658
<b>mRNA Refseq</b>	NM_016204
<b>Protein Refseq</b>	NP_057288
<b>MIM</b>	605120
<b>UniProt ID</b>	Q9UK05

 Tel: 1-631-559-9269 1-516-512-3133

 Email: [info@creative-biomart.com](mailto:info@creative-biomart.com)  Fax: 1-631-938-8127

 45-1 Ramsey Road, Shirley, NY 11967, USA

**SDS-PAGE**



 Tel: 1-631-559-9269 1-516-512-3133

 Email: [info@creative-biomart.com](mailto:info@creative-biomart.com)  Fax: 1-631-938-8127

 45-1 Ramsey Road, Shirley, NY 11967, USA