

Recombinant Active Human GDF2 Protein, His-tagged(N-ter)

Cat. No. GDF2-104H Lot. No. (See product label)

SPECIFICATION

Product Overview	Recombinant Active Human GDF2 Protein with His tag (N-ter) was expressed in E. coli.
Species	Human
Source	E.coli
Description	The protein encoded by this gene is a member of the bone morphogenetic protein (BMP) family and the TGF-beta superfamily. This group of proteins is characterized by a polybasic proteolytic processing site which is cleaved to produce a mature protein containing seven conserved cysteine residues. The members of this family are regulators of cell growth and differentiation in both embryonic and adult tissues. Studies in rodents suggest that this protein plays a role in the adult liver and in differentiation of cholinergic central nervous system neurons. Mutations in this gene are associated with hereditary hemorrhagic telangiectasia. [provided by RefSeq, Jan 2014]
Form	Powder
Bio-activity	Determined by its ability to induce alkaline phosphatase production by ATDC5 cells. The ED50 for this effect is < 0.4 ng/mL.
AA Sequence	SAGAGSHCQKTSLRVNFEDIGWDSWIIAPKEYEAYECKGGCFFPLADDVTPTKHAIV QTLVHLKFPTKVGKACCVPTKLSPIVLYKDDMGVPTLKYHYEGMSVAECGCR

 Tel: 1-631-559-9269 1-516-512-3133

 Email: info@creative-biomart.com  Fax: 1-631-938-8127

 45-1 Ramsey Road, Shirley, NY 11967, USA

Endotoxin	Endotoxin level is less than 0.01 EU/μg of the protein, as determined by the LAL test.
Purity	> 98% (by SDS-PAGE)
Applications	SDS-PAGE
Notes	For laboratory research only, not for drug, diagnostic or other use.
Storage	Lyophilized protein should be stored at -20°C. After reconstitution, aliquot and store at -20°C or -80°C for up to one month. Storage in frost free freezers is not recommended. Avoid repeated freeze/thaw cycles. Suggest spin the vial prior to opening.
Storage Buffer	20 mM Sodium citrate (pH 3.5) and 0.2 M NaCl.
Reconstitution	It is recommended to reconstitute the lyophilized protein in sterile water to a concentration not less than 100 μg/mL and incubate the stock solution for at least 20 min at room temperature to make sure the protein is dissolved completely.

GENE INFORMATION

Gene Name	GDF2 growth differentiation factor 2 [Homo sapiens]
Official Symbol	GDF2
Synonyms	GDF2; growth differentiation factor 2; growth/differentiation factor 2; BMP 9; BMP9; GDF-2; bone morphogenetic protein 9; BMP-9;
Gene ID	2658
mRNA Refseq	NM_016204

 Tel: 1-631-559-9269 1-516-512-3133

 Email: info@creative-biomart.com  Fax: 1-631-938-8127

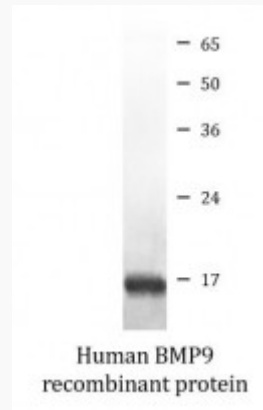
 45-1 Ramsey Road, Shirley, NY 11967, USA

Protein Refseq NP_057288

MIM 605120

UniProt ID Q9UK05

SDS-PAGE



 Tel: 1-631-559-9269 1-516-512-3133

 Email: info@creative-biomart.com  Fax: 1-631-938-8127

 45-1 Ramsey Road, Shirley, NY 11967, USA