

Recombinant Human GDF2 Protein (300-429 aa), His-tagged

Cat. No. GDF2-1823H Lot. No. (See product label)

SPECIFICATION

Product Overview	Recombinant Human GDF2 Protein (300-429 aa) is produced by Yeast expression system. This protein is fused with a 6xHis tag at the N-terminal. Research Area: Cell Biology. Protein Description: Full Length of Mature Protein.
Species	Human
Source	Yeast
ProteinLength	300-429 aa
Description	Potent circulating inhibitor of angiogenesis. Could be involved in bone formation. Signals through the type I activin receptor ACVRL1 but not other Alks. Signaling through SMAD1 in endothelial cells requires TGF-beta coreceptor endoglin/ENG.
Form	Tris-based buffer,50% glycerol
Molecular Mass	16.3 kDa
AA Sequence	HEEDTDGHVAAGSTLARRKRSAGAGSHCQKTSLRVNFEDIGWDSWIIAPKEYEAYE CKGGCFFPLADDVTPTKHAIVQTLVHLKFPTKVGKACCVPTKLSPISVLYKDDMGVP TLKYHYEGMSVAECGCR
Purity	> 90% as determined by SDS-PAGE.
Notes	Repeated freezing and thawing is not recommended. Store working aliquots at 4

 Tel: 1-631-559-9269 1-516-512-3133

 Email: info@creative-biomart.com  Fax: 1-631-938-8127

 45-1 Ramsey Road, Shirley, NY 11967, USA

centigrade for up to one week.

Storage

The shelf life is related to many factors, storage state, buffer ingredients, storage temperature and the stability of the protein itself. Generally, the shelf life of liquid form is 6 months at -20 centigrade/-80 centigrade. The shelf life of lyophilized form is 12 months at -20 centigrade/-80 centigrade.

Concentration

A hardcopy of COA with reconstitution instruction is sent along with the products.

GENE INFORMATION

Gene Name GDF2 growth differentiation factor 2 [Homo sapiens]

Official Symbol GDF2

Synonyms GDF2; BMP 9; BMP9; GDF-2; BMP-9;

Gene ID 2658

mRNA Refseq NM_016204

Protein Refseq NP_057288

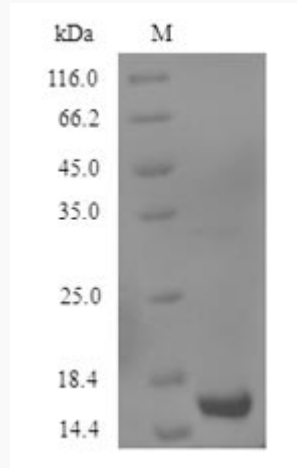
MIM 605120

UniProt ID Q9UK05

 Tel: 1-631-559-9269 1-516-512-3133

 Email: info@creative-biomart.com  Fax: 1-631-938-8127

 45-1 Ramsey Road, Shirley, NY 11967, USA



(Tris-Glycine gel) Discontinuous SDS-PAGE (reduced) with 5% enrichment gel and 15% separation gel.

 Tel: 1-631-559-9269 1-516-512-3133

 Email: info@creative-biomart.com  Fax: 1-631-938-8127

 45-1 Ramsey Road, Shirley, NY 11967, USA